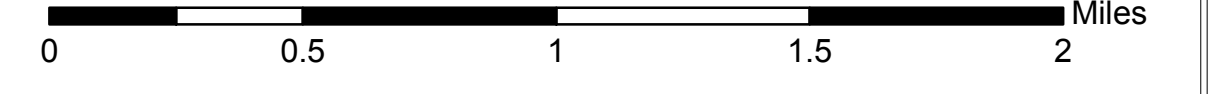
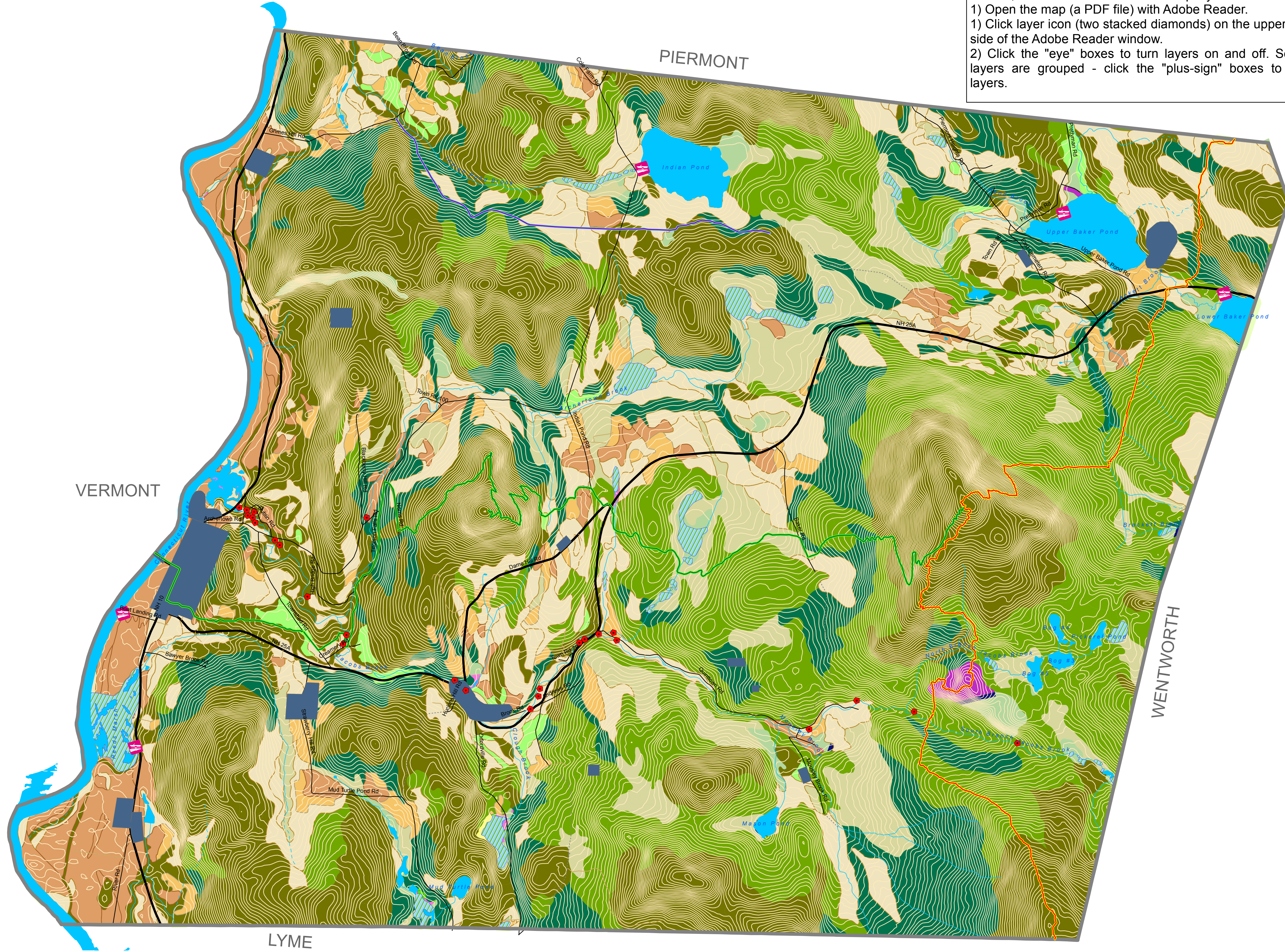


Natural Resources Interactive Map Orford, NH



This is an interactive map designed for viewing within Adobe Reader, which allows users to turn map layers on and off:
 1) Open the map (a PDF file) with Adobe Reader.
 1) Click layer icon (two stacked diamonds) on the upper left-hand side of the Adobe Reader window.
 2) Click the "eye" boxes to turn layers on and off. Some map layers are grouped - click the "plus-sign" boxes to show all layers.



- Legend**
- Public Boat Launches
 - Historic Mill Sites
 - Cross-Rivendell Trail
 - Indian Pond Heritage Trail
 - Appalachian Trail
 - Historic Areas
 - Town Boundary
- Roadways**
- State
 - Local
 - Not Maintained
 - Private
 - CT River
 - Waterbodies
 - Wetlands
 - Intermittent Streams
 - Perennial Streams
 - 20-Ft Elevation Contours
- Agricultural Soils**
Ranked High to Low
- Prime Farmland
 - Statewide Importance
 - Local Importance
- Forest Soils Groups**
- Group IA
 - Group IB
 - Group IC
 - Group IIA
 - Group IIB
 - Land in Current Use, 2009
- Public and Conserved Land**
- Lands with Conservation Easements
 - Public Undeveloped Lands
- Unfragmented Land**
- 2,000 - 5,000 acres
 - 5,000 - 10,000 acres
 - > 10,000 acres
- Top-Ranked Wildlife Habitat**
- Highest Rank Habitat by Condition in NH
 - Highest Rank Habitat by Condition in Biological Region
 - Supporting Landscapes
- Watersheds**
- Clay Brook
 - Hanover-Piermont Tributaries
 - Jacobs Brook
 - Pond Brook/ Tural Brook
 - National Wetlands Inventory
 - Floodplains
 - Aquifers
- Co-occurrence Analysis Results**
- 0 Features
 - 1 Feature
 - 2 Features Overlap
 - 3 Features Overlap
 - 4 Features Overlap
 - 5 Features Overlap

Map created by UVLSRPC for the Orford Conservation Commission, May 2011.