

Public and Conserved Lands Orford, NH

Legend

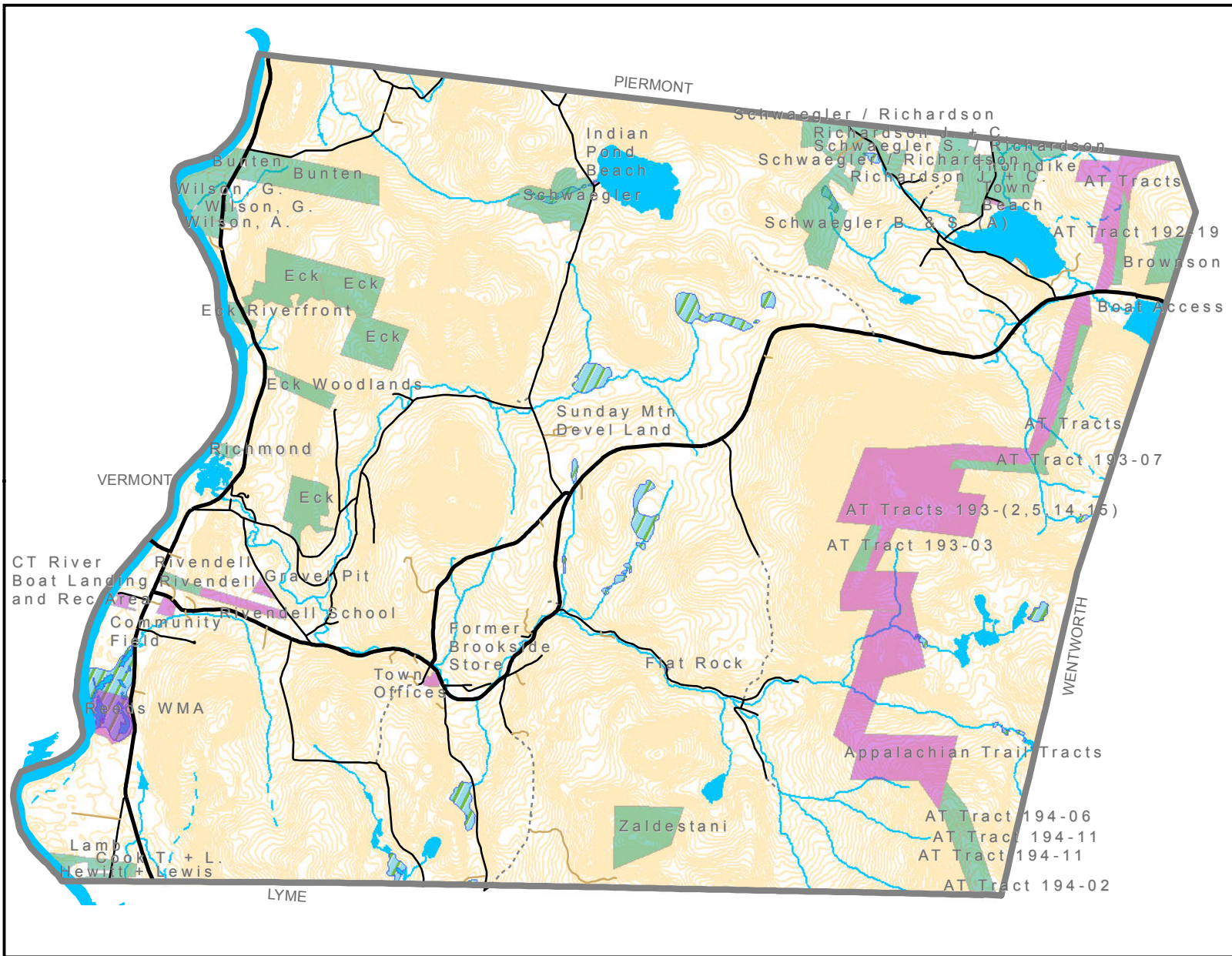
- Public and Conserved Land**
- Lands with Conservation Easements
 - Public Undeveloped Lands



Please note: Not all conservation lands are open for public recreation. Please consult with the easement holder or land-holding agency for information on public access. Landowner information is included in the Natural Resources Inventory report.

Map created by UVLSRPC for the Orford Conservation Commission, June 2011.

Please refer to Natural Resources Inventory and large map set for details on data sources.



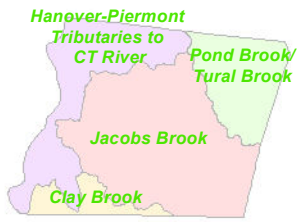
Water Resources Orford, NH

Legend

-  Aquifers
-  National Wetlands Inventory
-  Floodplains
-  Waterbodies
-  Wetlands
-  Intermittent Streams
-  Perennial Streams



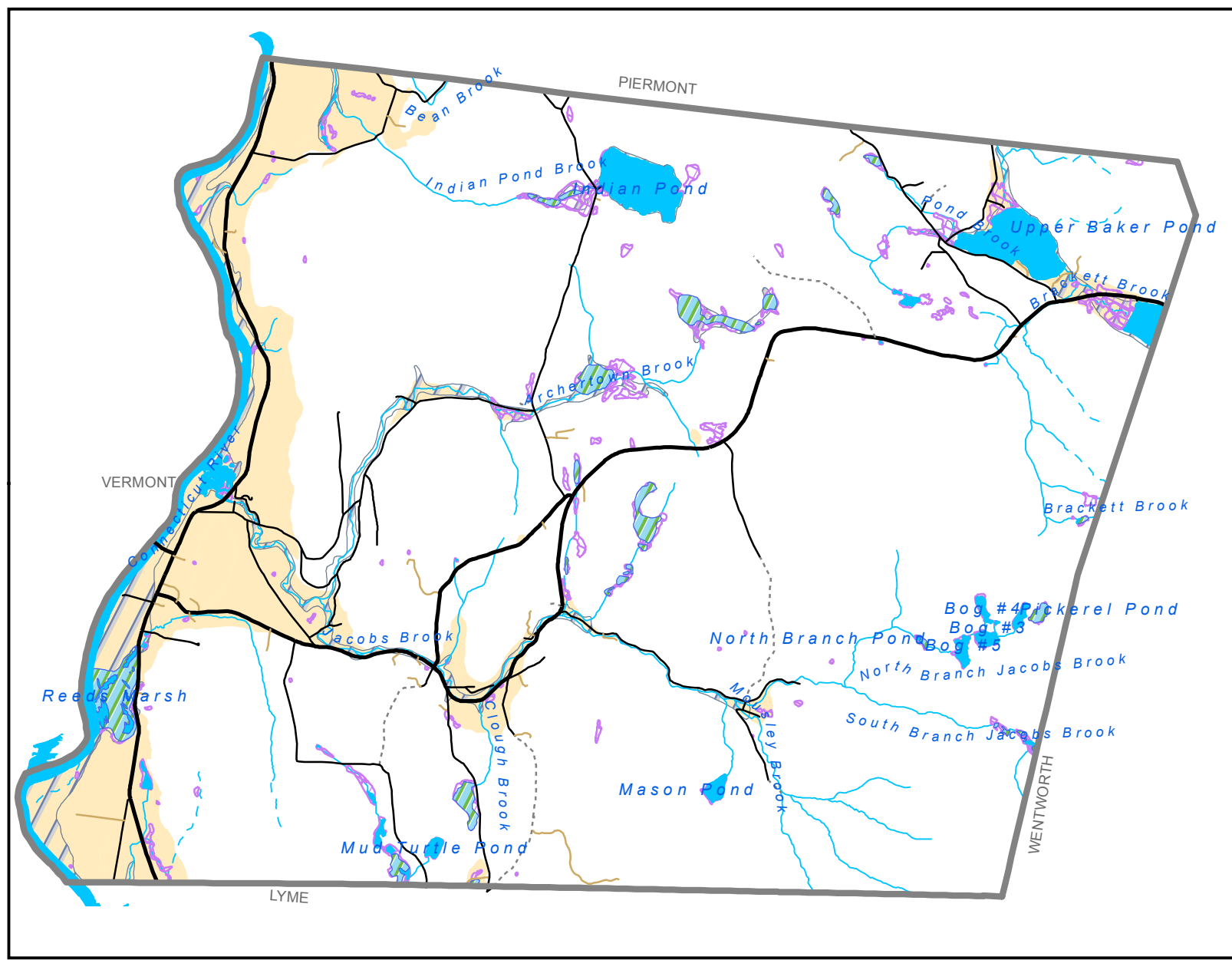
Orford Watershed Boundaries



The Pond Brook/Tural Brook watershed is part of the Baker River watershed. The other three watersheds in Orford drain to the Connecticut River.

Map created by UVLSRPC for the Orford Conservation Commission, June 2011.

Please refer to Natural Resources Inventory and large map set for details on data sources.



Agricultural and Forest Resources Orford, NH

Legend

Land in Current Use, 2009

Agricultural Soils

Prime Farmland

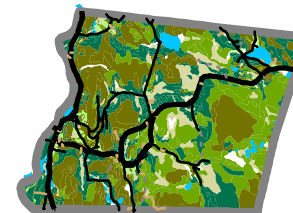
Statewide Importance

Local Importance

0 0.5 1 1.5 Miles



Soils that Support Commercial Forestry



Forest Soils Groups

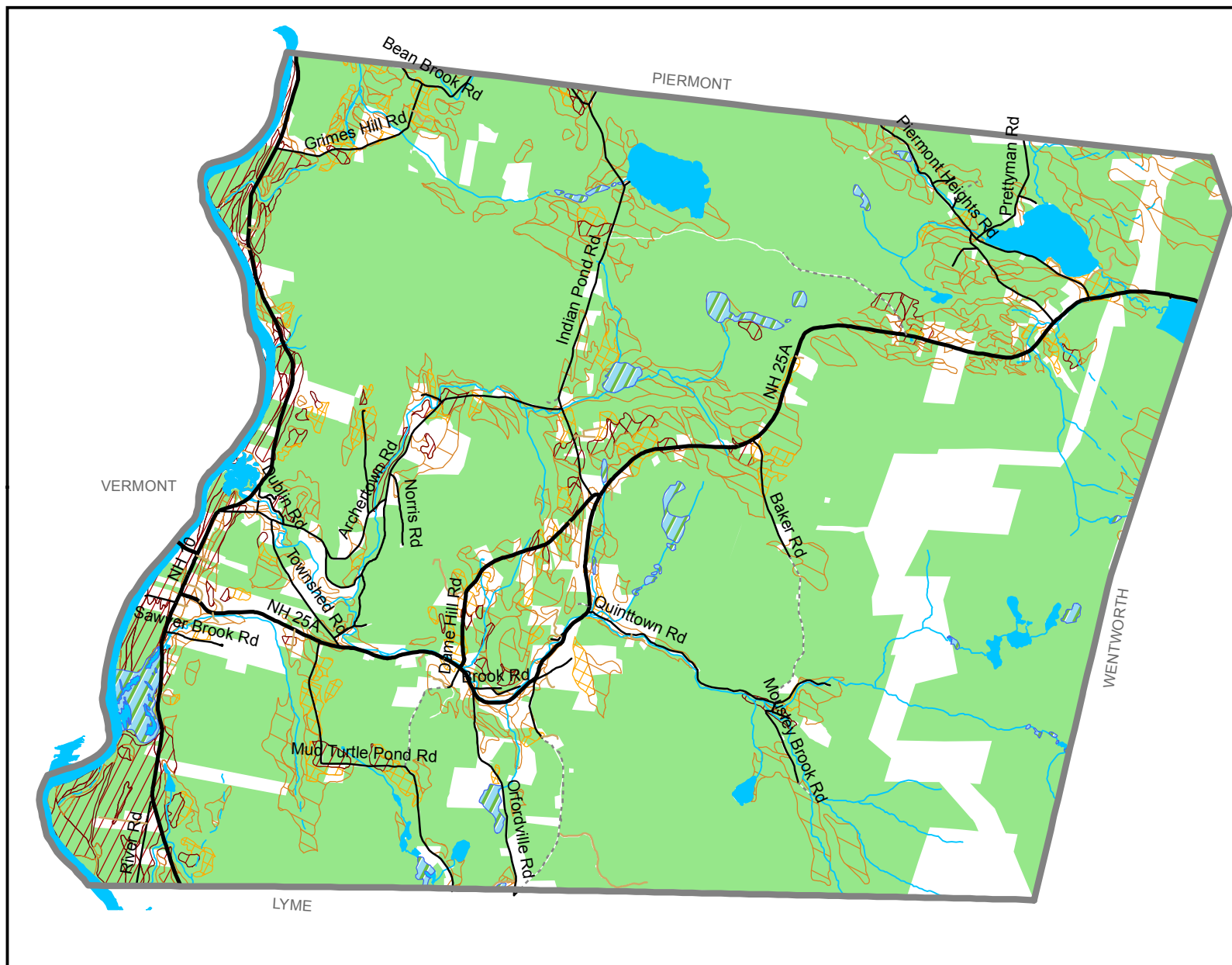
- Group IA
- Group IB
- Group IC
- Group IIA
- Group IIB

Map created by
UVLSRPC for the Orford
Conservation
Commission, June 2011.

Please refer to Natural
Resources Inventory and
large map set for details
on data sources.



Upper Valley Lake Sunapee
Regional Planning Commission

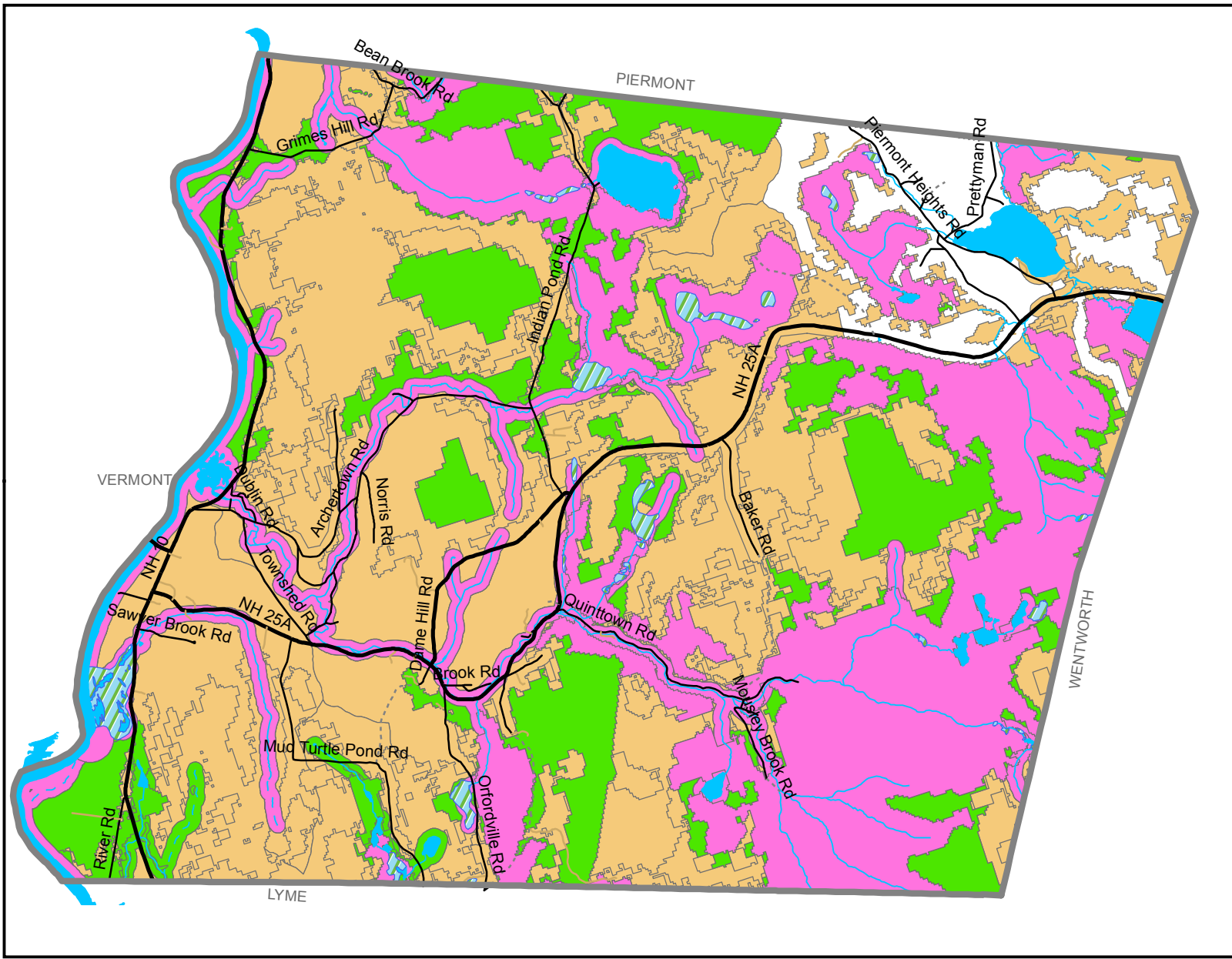
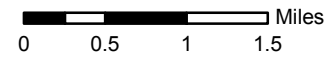


High-Ranking Wildlife Habitat Orford, NH



Legend

- Top-Ranked Wildlife Habitat
- Areas Not Highly Ranked
- Highest Rank Habitat in NH
- Highest Rank Habitat in Region
- Supporting Landscapes



This map represents the 2010 highest ranked wildlife habitat by ecological condition, as determined by the New Hampshire Fish and Game Department for the State Wildlife Action Plan.

About this map:
Information about habitat condition was analyzed to develop a statewide and regional ranking and identify the highest quality habitat relative to all areas of a given habitat type in the state.

Map created by UVLSRPC for the Orford Conservation Commission, June 2011.





Please refer to Natural Resources Inventory and large map set for details on data sources.

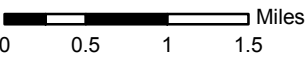


Upper Valley Lake Sunapee
Regional Planning Commission

Cultural and Historic Resources Orford, NH

Legend

- Cross-Rivendell Trail
- Indian Pond Heritage Trail
- Appalachian Trail
-  Public Boat Launches
-  Historic Mill Sites
-  Historic Areas
-  Public and Conserved Land



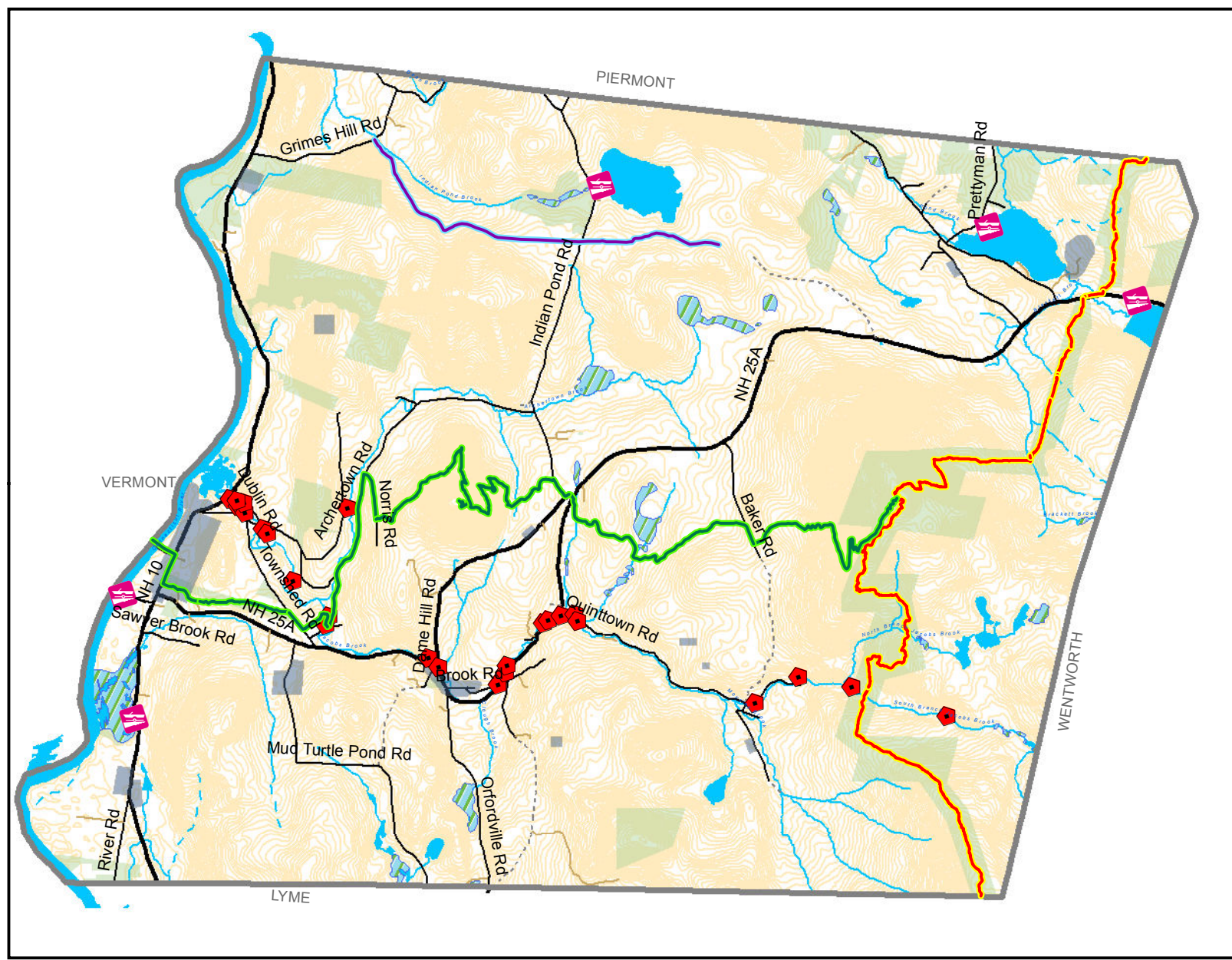
Please note: Not all conservation lands are open for public recreation. Please consult with the easement holder or land-holding agency for information on public access. For more details on land ownership and conservation status, refer to the Public and Conserved Lands map and Natural Resources Inventory.

Map created by UVLSRPC for the Orford Conservation Commission, June 2011.

Please refer to Natural Resources Inventory and large map set for details on data sources.

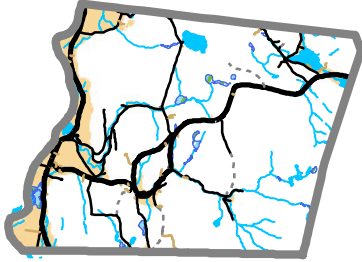


Upper Valley Lake Sunapee
Regional Planning Commission

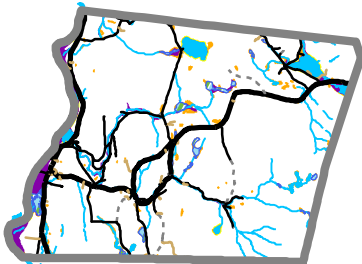


Components of the Co-occurrence Analysis

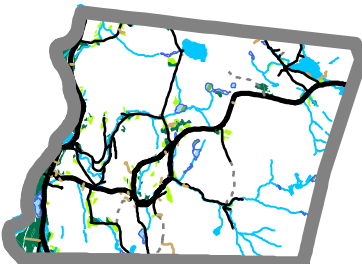
Groundwater Aquifers
- mapped by US Geological Survey



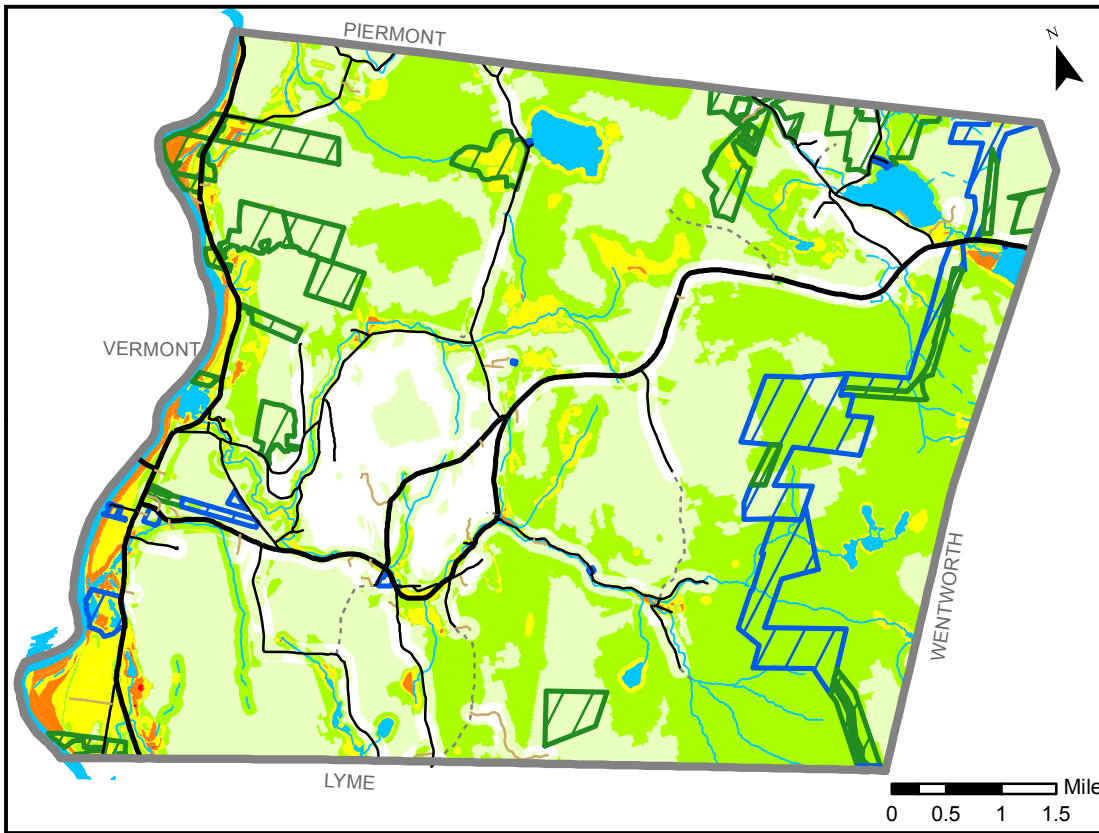
Surface Water Resources
- 100-yr floodplains
- 100 feet around wetlands
- 250 feet around public waters



Prime and state agricultural soils
- mapped by Grafton County Soil Survey



Dark Green: All areas are prime farmland
Light Green: Farmland of statewide importance



Co-occurrence Analysis Orford, NH

Legend

Analysis Results

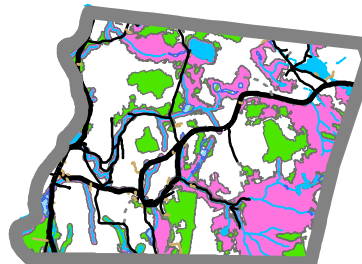
- 0 Features
- 1 Feature
- 2 Features Overlap
- 3 Features Overlap
- 4 Features Overlap
- 5 Features Overlap

- Public and Conserved Land
- Conservation Easement
- Public Ownership

A co-occurrence analysis shows where **multiple** natural resources are found at the **same** location.

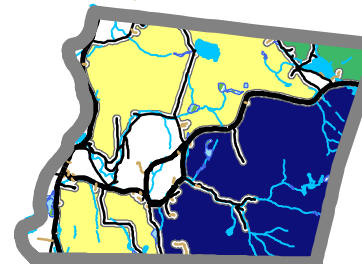
To organize this analysis, five natural resources were identified by the Orford Conservation Commission. Each of the five natural resource component were virtually "stacked" one on top of the other using the computer mapping software ArcGIS. Where the features in all five component maps overlapped, the co-occurrence analysis shows a value of "five." Where the features in only four of the five component maps overlapped, the analysis shows a value of "four" and so on. This is one tool of many to use in evaluating natural resources values on a town-wide basis.

Tier 1 and 2 Wildlife Habitat
- by NH Fish & Game, 2010 Wildlife Action Plan



Pink: Highest Ranked Habitat in NH
Light Green: Highest Ranked Habitat in Region

Large Blocks of Unfragmented Lands
(over 2,000 acres)



Yellow: 2,000 - 5,000 ac
Green: 5,000 - 10,000 ac
Blue: > 10,000

Map created by UVLSRPC for the Orford Conservation Commission, June 2011. Please refer to Natural Resources Inventory and large map set for details on data sources.