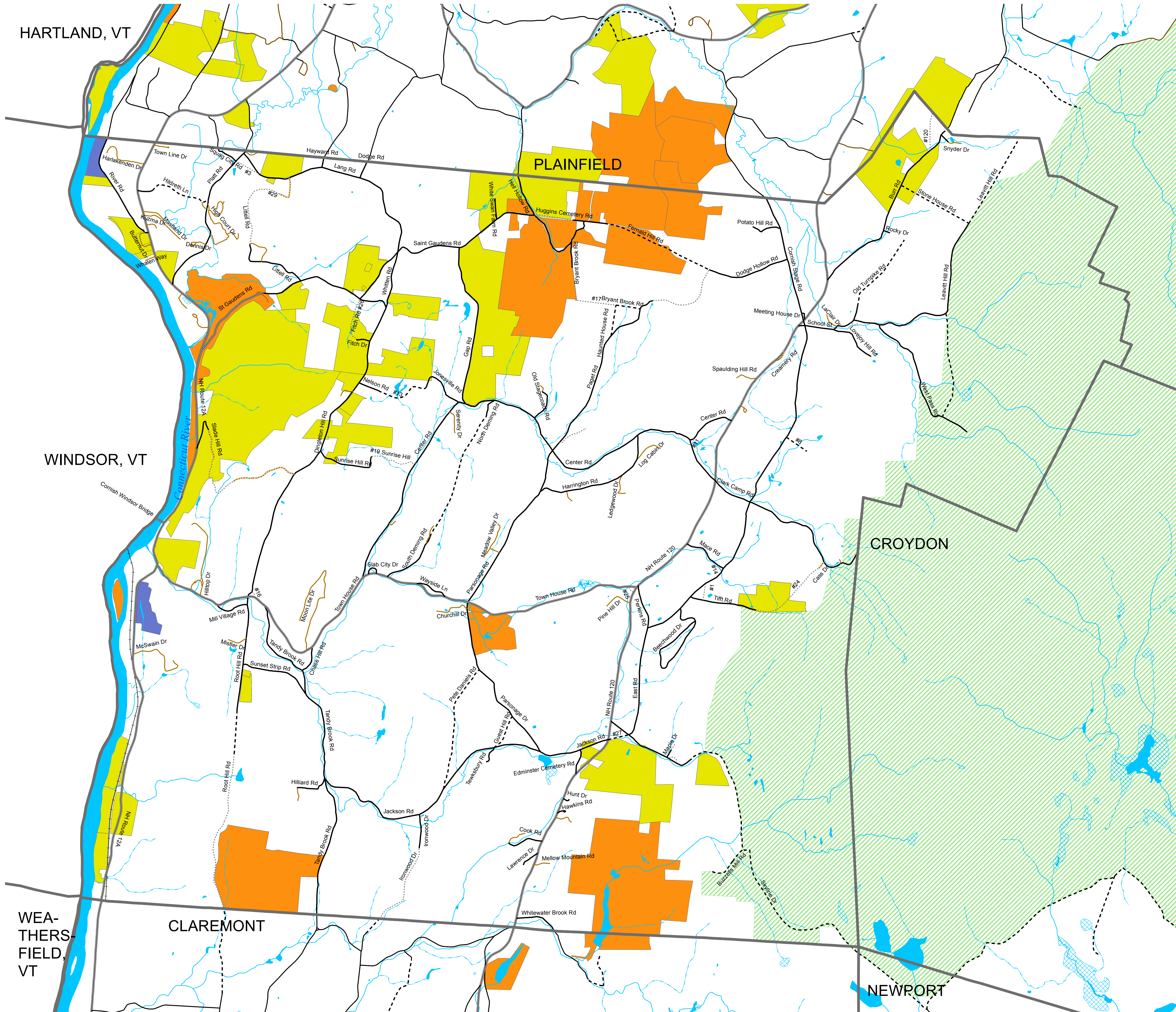


Protected Lands Cornish, New Hampshire



Legend

Lands Protected from Development

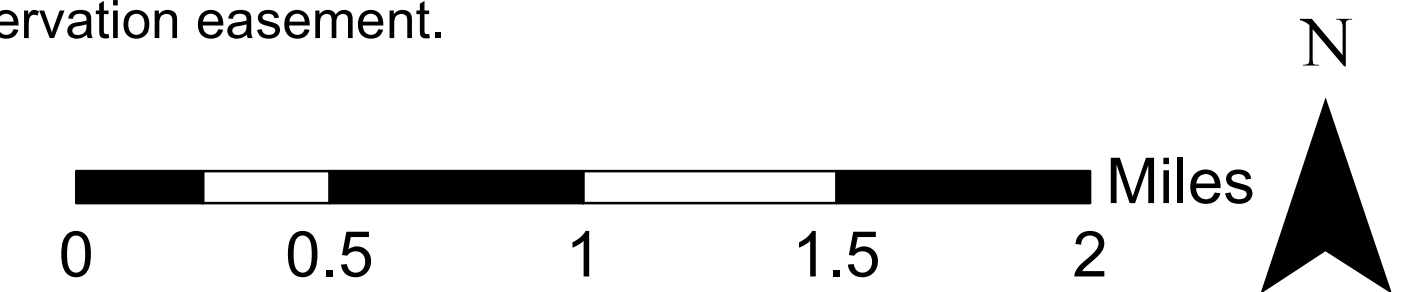
- Privately Owned with Agricultural Preservation
- Privately Owned with a Conservation Easement
- Land Owned by Public Entity or Conservation Org.
- Corbin Park - Privately owned, not conserved

Roadways

- State
- Class V
- Class VI
- Discontinued
- Privately Maintained Drive (not all shown)
- Discontinued; Privately Maintained Drive
- Railroad

Please note: Not all conserved lands are open for public recreation. Please consult with the easement holder or land-holding agency for information on public access.

About this map: This map shows both private lands permanently protected from development by a conservation easement, as well as undeveloped land owned by a public entity or conservation organization and managed for open space, public recreation, wildlife habitat or other non-development purposes. The map also includes Corbin Park, which is privately owned and closed to the public; the land is not protected from development by a conservation easement.



Map created by Upper Valley Lake Sunapee Regional Planning Commission for the Town of Cornish, Dec 2013.

This map is intended for reference and planning purposes only. While this map represents the best available data, the Town of Cornish and UVLSRPC make no claim as to the validity or reliability of these data.

Data Sources:

Conserved and Public Lands from the Town of Cornish, NHGRANIT, 2012, and Upper Valley Land Trust, 2013. Roads from the NH Department of Transportation, 2008, with updates from Cornish town maps and Cornish Planning Board. Water features from NH Hydrography Dataset from CSRC, UNH, 2006. Town boundaries, railroad and place names from CSRC, UNH, 1992. Statewide datasets (1:24,000 scale) distributed by Complex Systems Research Center (CSRC), University of New Hampshire (UNH) via NH GRANIT.

Disclaimer:

Digital data in NH GRANIT represent the efforts of the contributing agencies to record information from the cited source materials. CSRC, under contract to the Office of Energy and Planning (OEP), and in consultation with cooperating agencies, maintains a continuing program to identify and correct errors in these data. OEP, CSRC, and the cooperating agencies make no claim as to the validity or reliability or to any implied uses of these data.