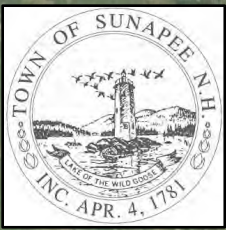


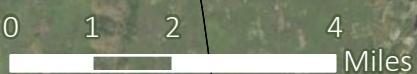
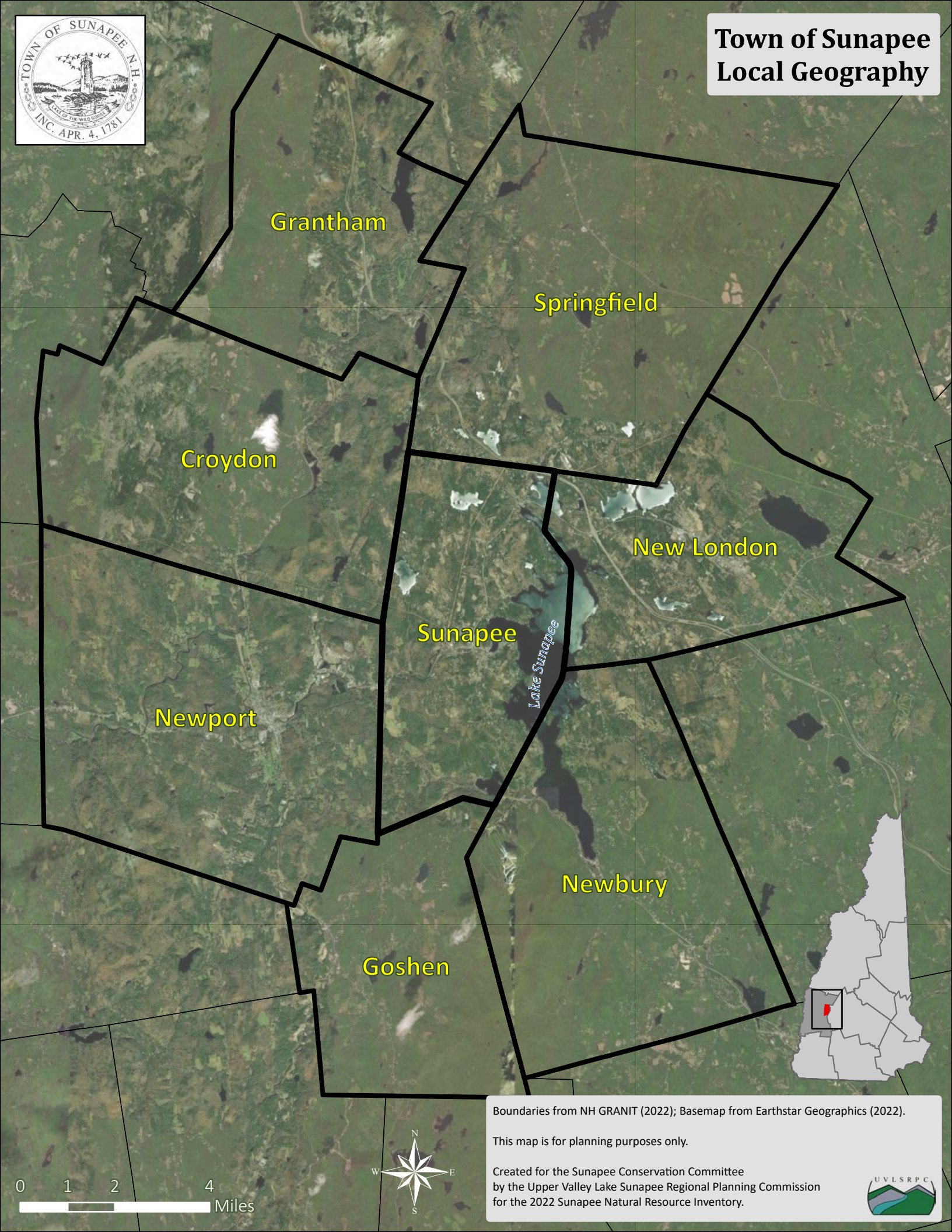
8. MAPS

The maps in this NRI and Conservation Plan are include:

- Map 1. Local Geography
- Map 2. Geology
- Map 3. Topography
- Map 4. Level IV Ecoregion around Sunapee
- Map 5. Surface Waters: Waterbodies and Streams
- Map 6. Community and Development
- Map 7. Land Cover
- Map 8. Wildlife and Important Habitat
- Map 9. Habitat Types
- Map 10. Surface Waters: Wetlands
- Map 11. Groundwater
- Map 12. Agriculture
- Map 13. Forest Soil Productivity
- Map 14. Culturally Historic Resources
- Map 15. Recreation and Conserved Land
- Map 16. Resiliency Network
- Map 17. Recognized Biodiversity
- Map 18. Resilient Sites
- Map 19. Local Connectedness
- Map 20. Regional Wildlife Flow
- Map 21. Zoning
- Map 22. Water Protections
- Map 23. Natural Resource Co-Occurrence and Priority Geographic Zones



Town of Sunapee Local Geography



Boundaries from NH GRANIT (2022); Basemap from Earthstar Geographics (2022).

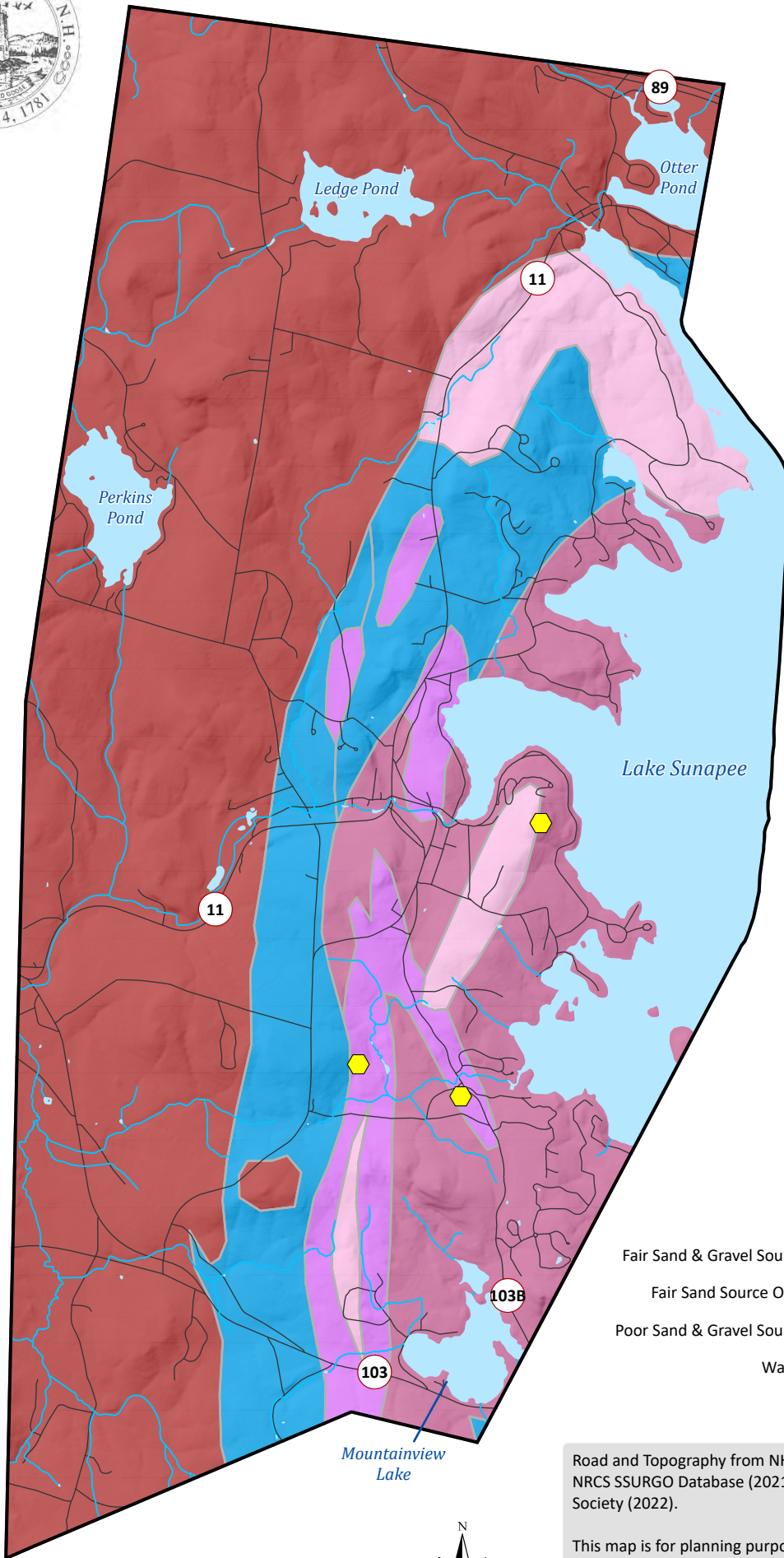
This map is for planning purposes only.

Created for the Sunapee Conservation Committee
by the Upper Valley Lake Sunapee Regional Planning Commission
for the 2022 Sunapee Natural Resource Inventory.





Town of Sunapee Geology



Metamorphic Rock

- Littleton Formation, Early Devonian

Igneous Rock

- Concord Granite, Late Devonian
- Bethlehem Granodiorite, Early Devonian
- Kinsman Granodiorite, Early Devonian
- Spaulding Tonalite, Early Devonian

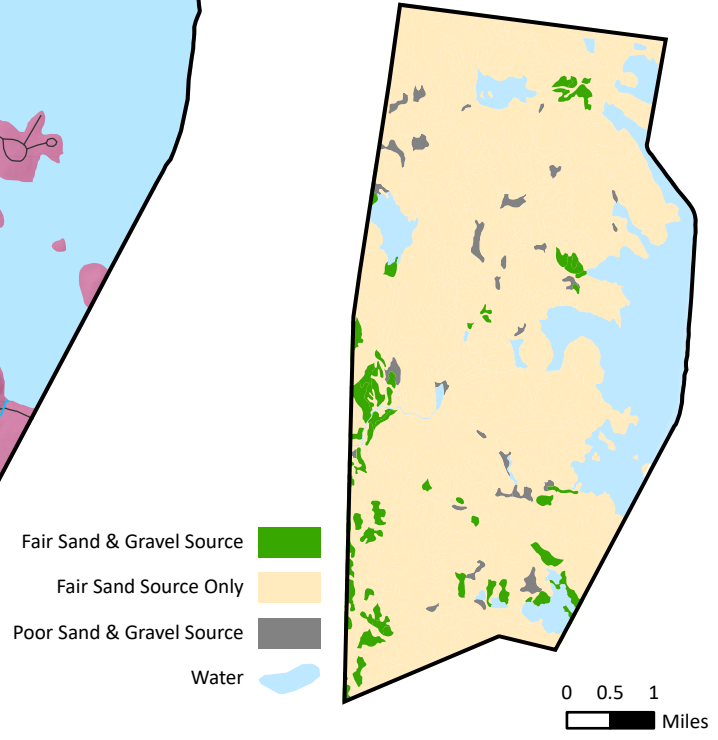
Water Features

- Waterbodies
- Rivers and Streams

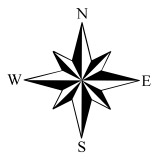
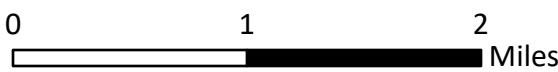
Town Features

- State & Local Roads
- Named Rock Features

Sand & Gravel



- Fair Sand & Gravel Source
- Fair Sand Source Only
- Poor Sand & Gravel Source
- Water



Road and Topography from NH GRANIT (2022); National Hydrography Dataset (2018); NRCS SSURGO Database (2021); Rock feature details from Sunapee Historical Society (2022).

This map is for planning purposes only.

Created for the Sunapee Conservation Commission by the Upper Valley Lake Sunapee Regional Planning Commission for the 2022 Sunapee Natural Resource Inventory.





Town of Sunapee Topography



Slope

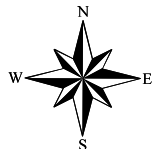
- < 6%
- 6% - 12%
- 12% - 18%
- 18% - 25%
- > 25%

Water Features

- Waterbodies
- Rivers and Streams

Town Features

- State Roads
- Local Roads
- 10m Contours
- Prominent Peaks

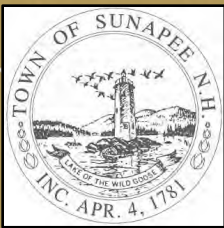


Road and Topography data from NH GRANIT (2022); National Hydrography Dataset (2018); Prominent Peak details from Sunapee Conservation Commission (2022).


This map is for planning purposes only.

Created for the Sunapee Conservation Commission by the Upper Valley Lake Sunapee Regional Planning Commission for the 2022 Sunapee Natural Resource Inventory.



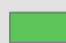







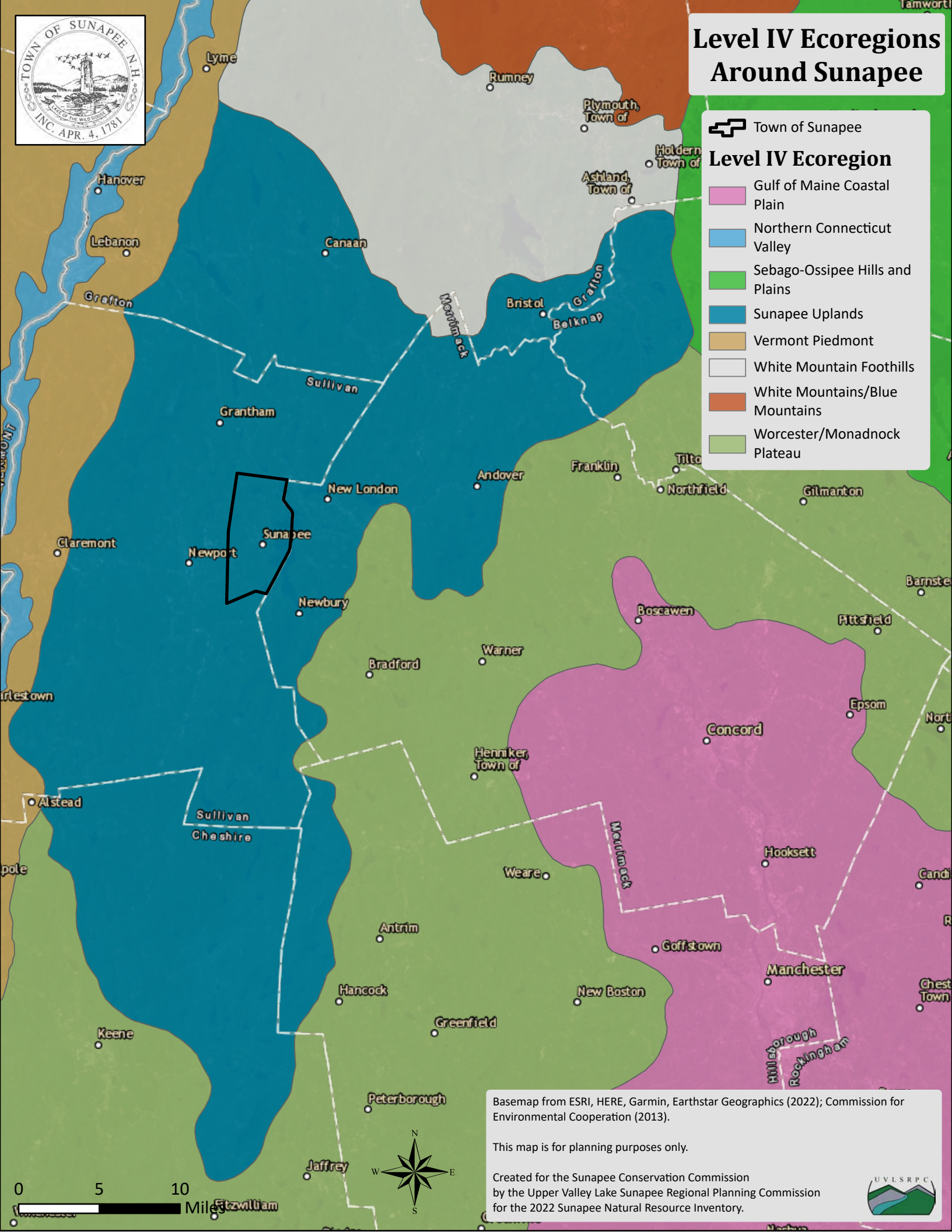


Level IV Ecoregions Around Sunapee

 Town of Sunapee

Level IV Ecoregion

-  Gulf of Maine Coastal Plain
-  Northern Connecticut Valley
-  Sebago-Ossipee Hills and Plains
-  Sunapee Uplands
-  Vermont Piedmont
-  White Mountain Foothills
-  White Mountains/Blue Mountains
-  Worcester/Monadnock Plateau



Basemap from ESRI, HERE, Garmin, Earthstar Geographics (2022); Commission for Environmental Cooperation (2013).

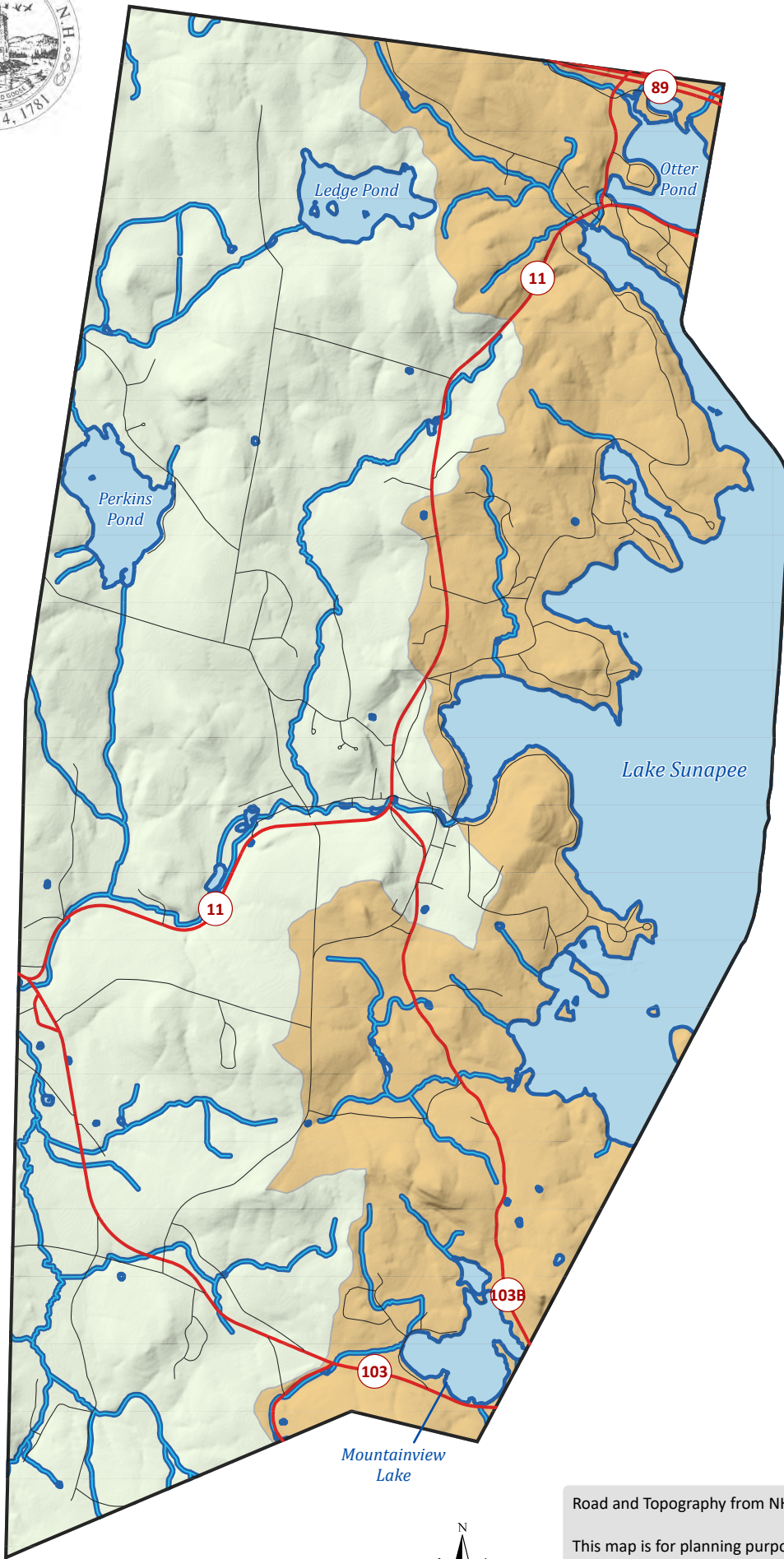
This map is for planning purposes only.

Created for the Sunapee Conservation Commission by the Upper Valley Lake Sunapee Regional Planning Commission for the 2022 Sunapee Natural Resource Inventory.





Town of Sunapee Waterbodies & Streams



Watersheds

- Long Pond Brook-Sugar River
- Sunapee Lake

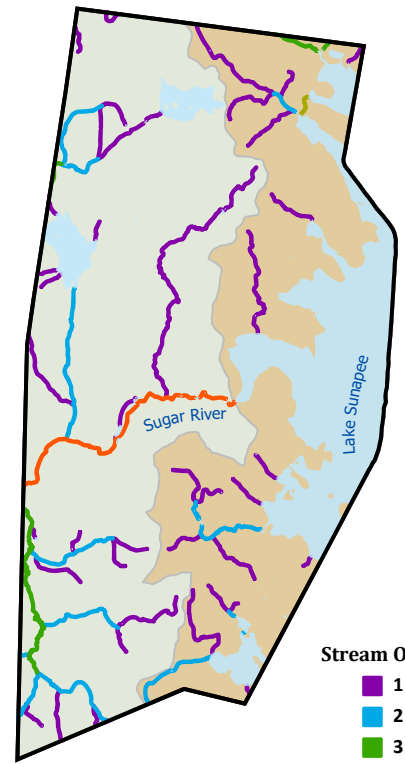
Water Features

- Water Bodies
- Rivers and Streams
- Riparian Zones

Town Features

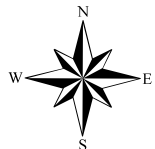
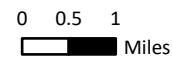
- State Roads
- Local Roads

NHD Stream Classifications



Stream Order

- 1
- 2
- 3
- 4
- 5



Road and Topography from NH GRANIT (2022); National Hydrography Dataset (2018);

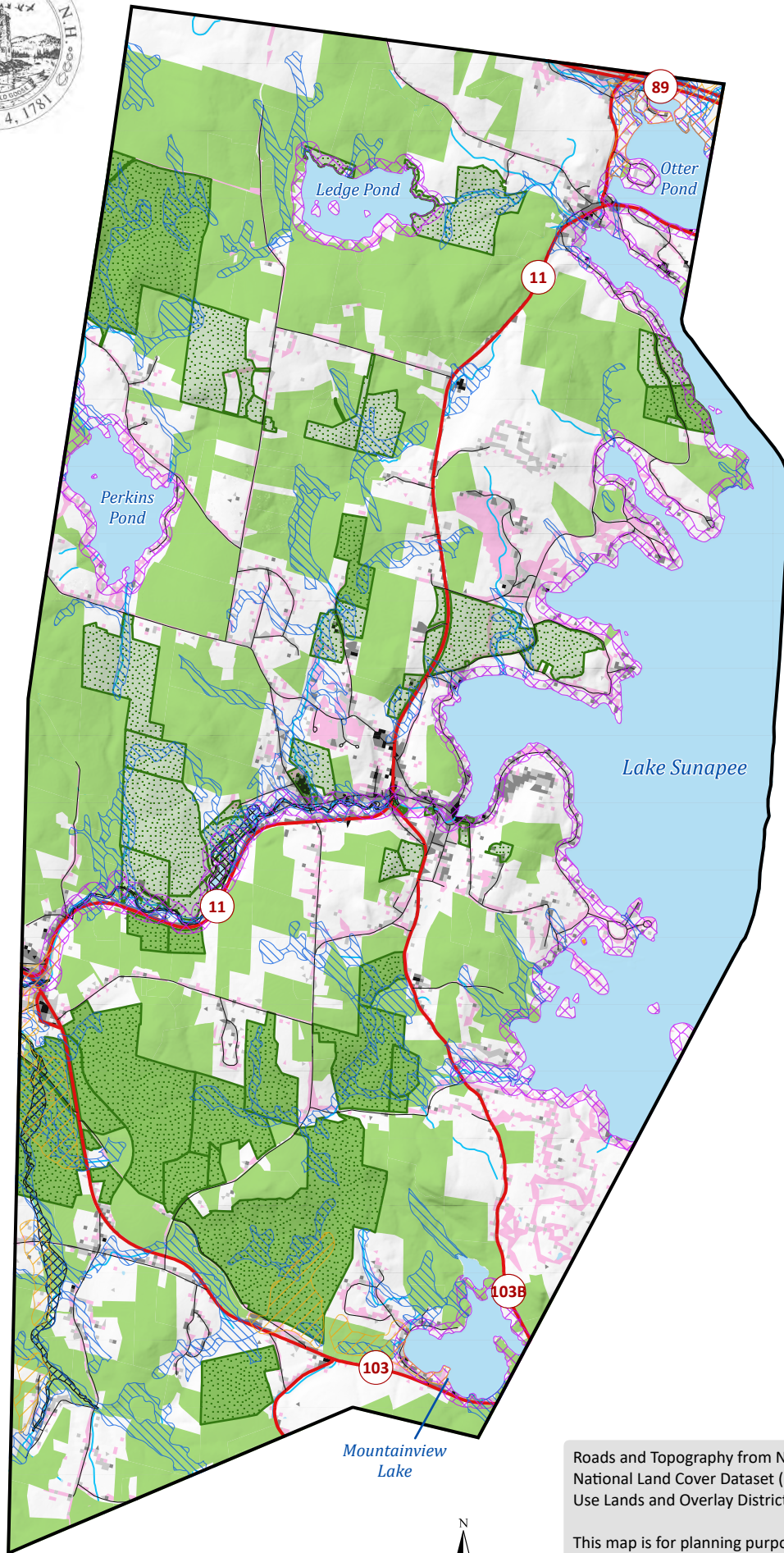
This map is for planning purposes only.

Created for the Sunapee Conservation Commission
by the Upper Valley Lake Sunapee Regional Planning Commission
for the 2022 Sunapee Natural Resource Inventory.





Town of Sunapee Community & Development



Developed Land Cover

- Developed, High Intensity
- Developed, Medium Intensity
- Developed, Low Intensity
- Developed, Open Space

FEMA Flood Zones

- 0.2% Chance Annual Flood Hazard
- Floodway

Water Features

- Waterbodies
- Rivers and Streams

Town Features

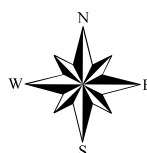
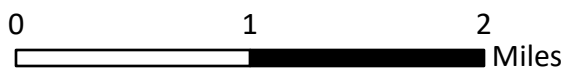
- State Roads
- Local Roads
- Current Use Land
- Conserved Land
- Shoreline Overlay District
- Wetlands Overlay District
- Aquifer Overlay District

Note: This map shows parcels where current use is in place. It does not delineate the area of each parcel where current use applies.

Roads and Topography from NH GRANIT (2022); National Hydrography Dataset (2018); National Land Cover Dataset (2019); FEMA National Flood Hazard Layer (2006); Current Use Lands and Overlay Districts from Town of Sunapee (2022).

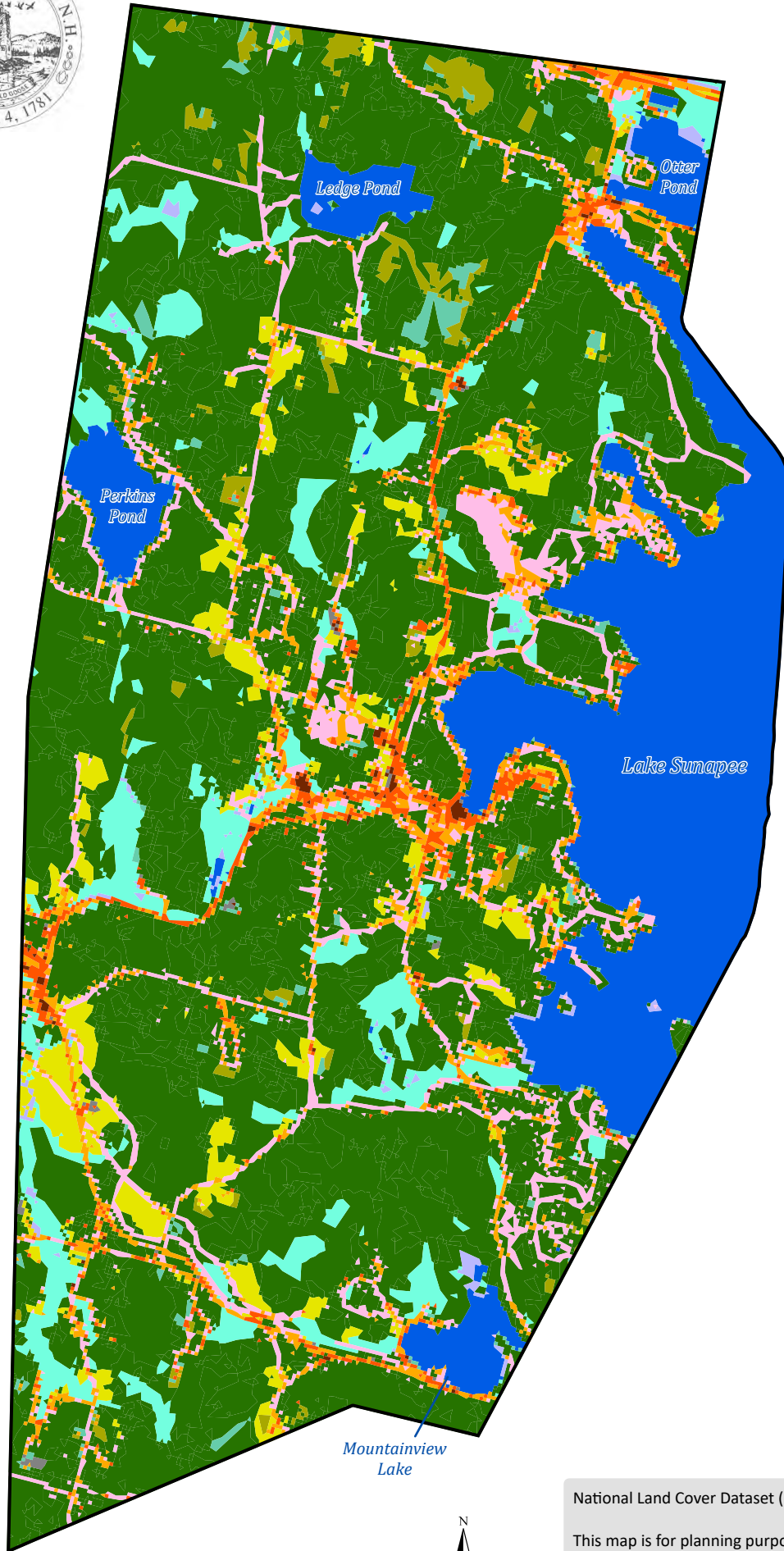
This map is for planning purposes only.

Created for the Sunapee Conservation Commission by the Upper Valley Lake Sunapee Regional Planning Commission for the 2022 Sunapee Natural Resource Inventory





Town of Sunapee Land Cover



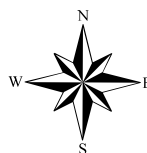
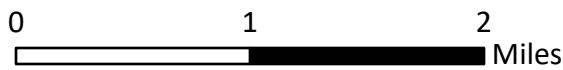
Land Cover Type

- Developed, High Intensity
- Developed, Medium Intensity
- Developed, Low Intensity
- Developed, Open Space
- Barren Land
- Hay/Pasture
- Shrub/Scrub
- Herbaceous
- Woody Wetlands
- Emergent Herbaceous Wetlands
- Open Water
- Forest

Land Cover Change 2001-2019



Area Where Land Cover Type Changed 2001-2019



National Land Cover Dataset (2001, 2011, 2019).

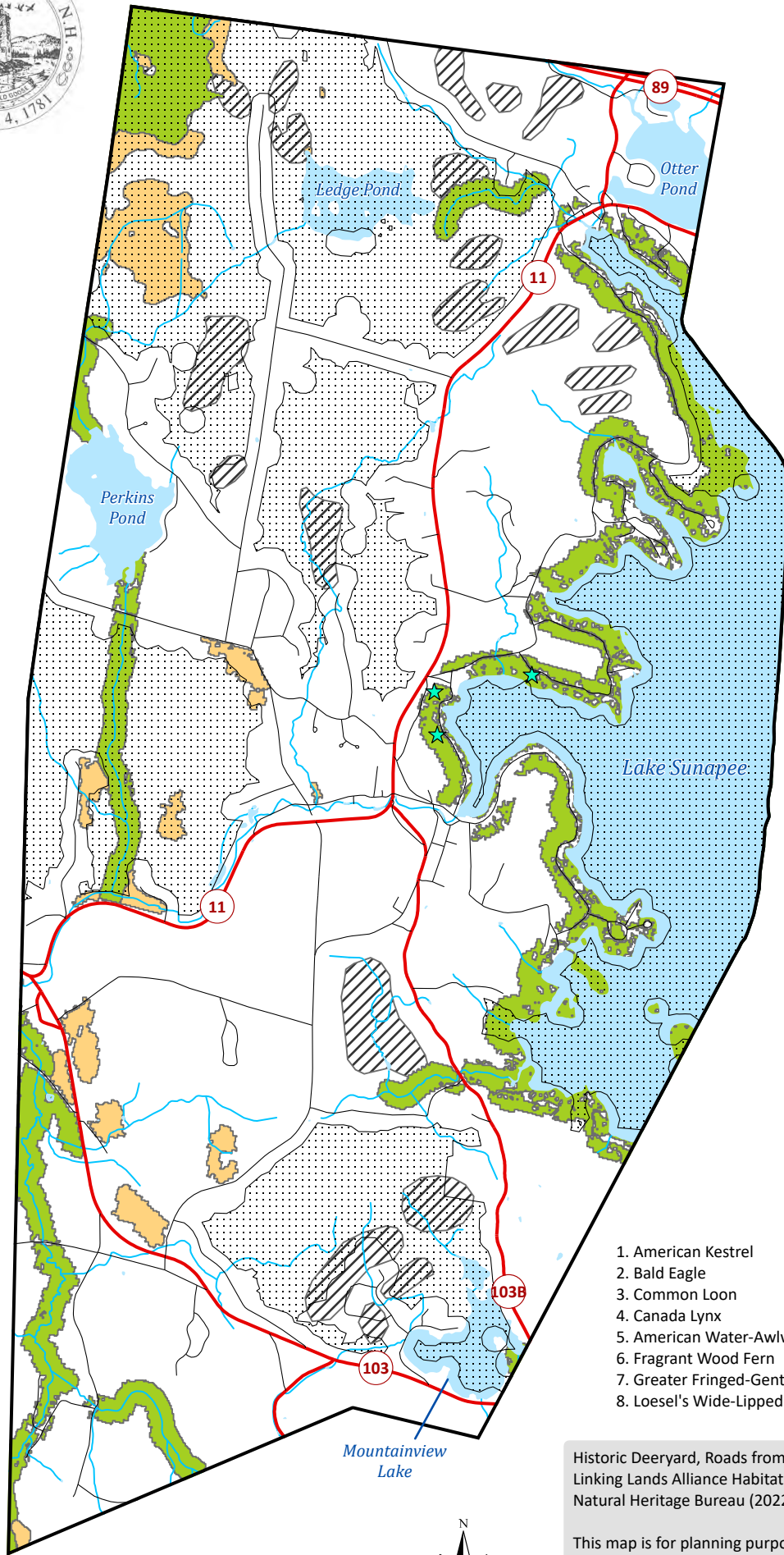
This map is for planning purposes only.

Created for the Sunapee Conservation Committee by the Upper Valley Lake Sunapee Regional Planning Commission for the 2022 Sunapee Natural Resource Inventory.





Town of Sunapee Wildlife & Habitat



Important Habitats

- WAP Tier 1 Habitat
- WAP Tier 2 Habitat
- Unbroken Habitat Blocks > 500 Acres
- Historic Deeryards

Water Features

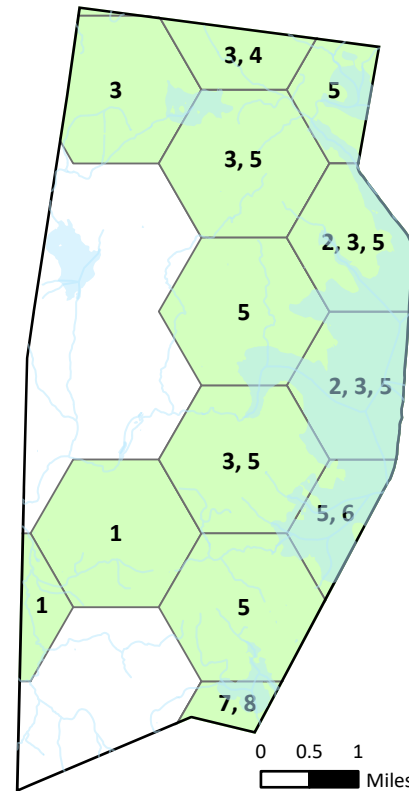
- Waterbodies
- Rivers and Streams
- Vernal Pools

Town Features

- State Roads
- Local Roads

Historical Rare Species Sightings

1. American Kestrel
2. Bald Eagle
3. Common Loon
4. Canada Lynx
5. American Water-Awlwort
6. Fragrant Wood Fern
7. Greater Fringed-Gentian
8. Loesel's Wide-Lipped Orchid



Historic Deeryard, Roads from NH GRANIT (2022); NH Wildlife Action Plan (2020); Linking Lands Alliance Habitat Blocks (2021); National Hydrography Dataset (2018); NH Natural Heritage Bureau (2022) & Sunapee Conservation Commission (2022).

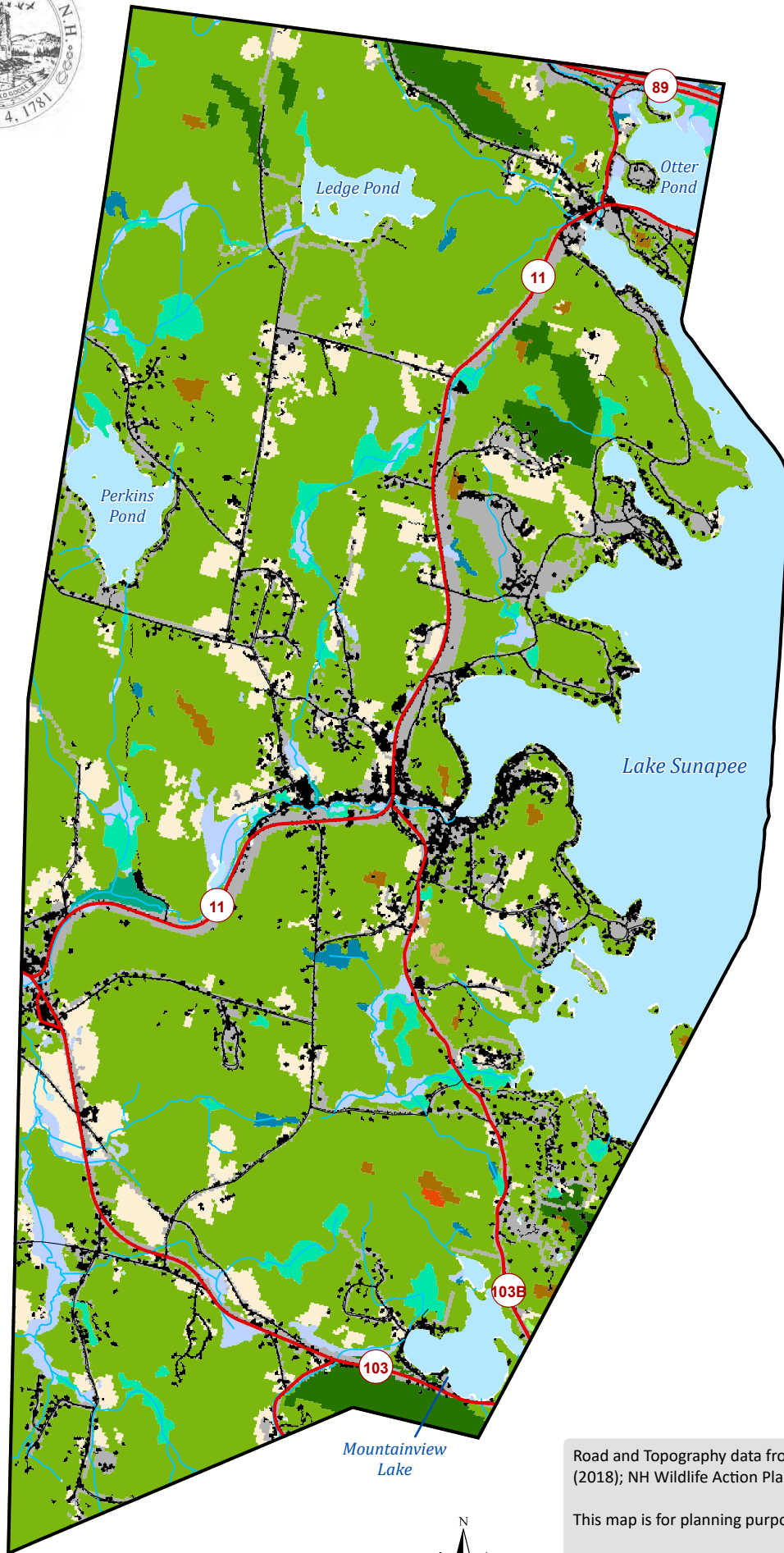
This map is for planning purposes only.

Created for the Sunapee Conservation Commission by the Upper Valley Lake Sunapee Regional Planning Commission for the 2022 Sunapee Natural Resource Inventory





Town of Sunapee Habitat Types



WAP Habitat Type

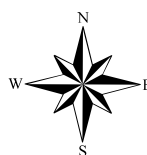
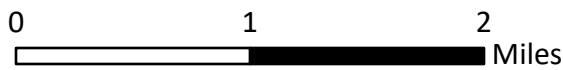
- Northern hardwood-conifer
- Hemlock-hardwood-pine
- Floodplain forest
- Peatland
- Temperate swamp
- Northern swamp
- Wet meadow/shrub wetland
- Grassland
- Sand/Gravel
- Rocky ridge
- Cliff and Talus
- Developed or Barren land
- Developed Impervious

Water Features

- Waterbodies
- Rivers and Streams

Town Features

- State Roads
- Local Roads



Road and Topography data from NH GRANIT (2022); National Hydrography Dataset (2018); NH Wildlife Action Plan (2020).

This map is for planning purposes only.

Created for the Sunapee Conservation Commission by the Upper Valley Lake Sunapee Regional Planning Commission for the 2022 Sunapee Natural Resource Inventory.





Town of Sunapee Surface Water Wetlands



Hydric Soils & Wetlands

- All Hydric
- Partially Hydric (76 - 95%)
- NWI Wetlands

Water Features

- Waterbodies
- Rivers and Streams
- Vernal Pools

Town Features

- State Roads
- Local Roads
- Active Farms

Note: Vernal pools pictured do not reflect a full town-wide assessment.

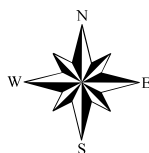
Road and Topography from NH GRANIT (2022); National Hydrography Dataset (2018); NRCS SSURGO Database (2021); Vernal pool and Active farm details from Sunapee Conservation Commission (2022)..

This map is for planning purposes only.

Created for the Sunapee Conservation Commission
by the Upper Valley Lake Sunapee Regional Planning Commission
for the 2022 Sunapee Natural Resource Inventory.

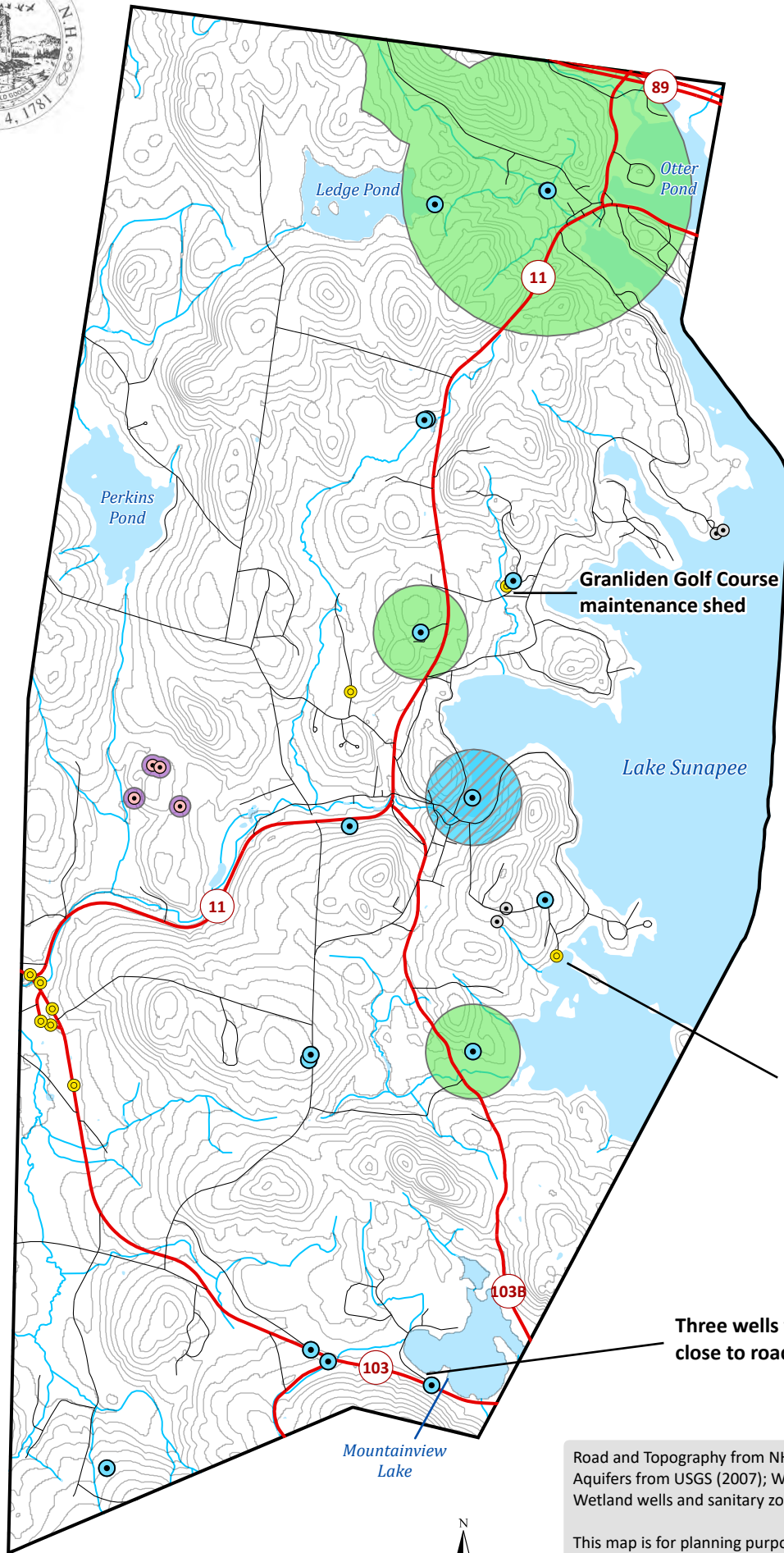


0 1 2 Miles





Town of Sunapee Groundwater



Water Supplies

- Public Water Supplies
- Potential Contamination Sources
- Potential Future Public Water Supplies
- Inactive Former Public Water Supplies
- Water Supply Intake Protection Areas
- Wellhead Protection Areas
- Wendell Marsh Well Sanitary Zones

Water Features

- Waterbodies
- Rivers and Streams

Town Features

- State Roads
- Local Roads
- 10m Contours

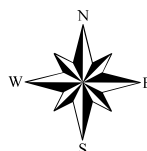
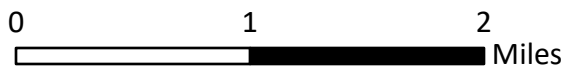
Burkehaven Boatworks on Lake Sunapee

Three wells very close to roadway

Road and Topography from NH GRANIT (2022); National Hydrography Dataset (2018); Aquifers from USGS (2007); Water supply details from NHDES (2022); Wendall Marsh Wetland wells and sanitary zone details from Town of Sunapee (2015).

This map is for planning purposes only.

Created for the Sunapee Conservation Committee by the Upper Valley Lake Sunapee Regional Planning Commission for the 2022 Sunapee Natural Resource Inventory.





Town of Sunapee Agriculture

Farmland Soils

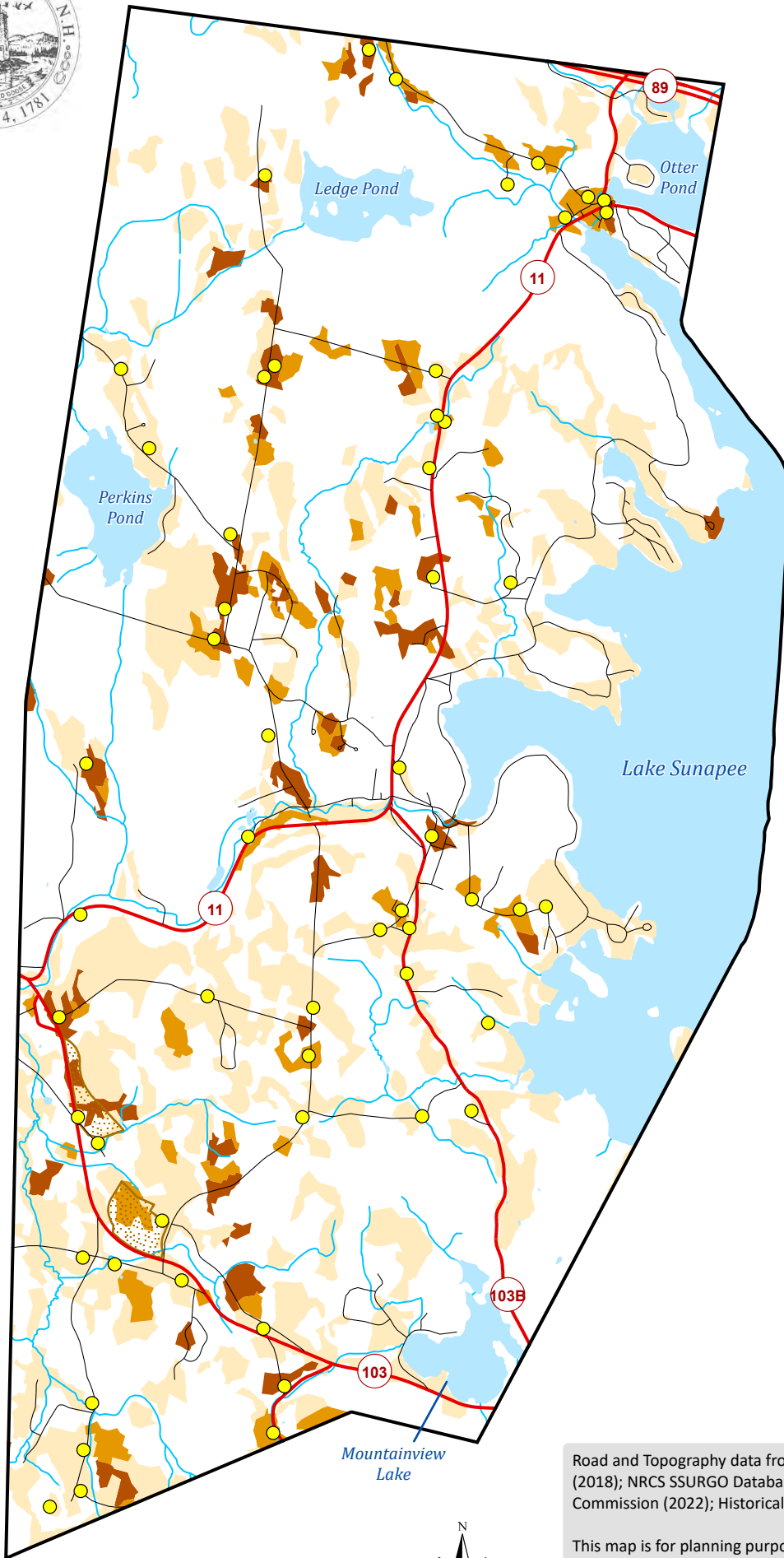
- Federal Prime Farmland
- Statewide Importance
- Local Importance

Water Features

- Waterbodies
- Rivers and Streams

Town Features

- State Roads
- Local Roads
- Active Farms
- Significant Historical Farmhouses and Barns



Road and Topography data from NH GRANIT (2022); National Hydrography Dataset (2018); NRCS SSURGO Database (2021); Active farms from Sunapee Conservation Commission (2022); Historical buildings from Sunapee Historical Society (2022).

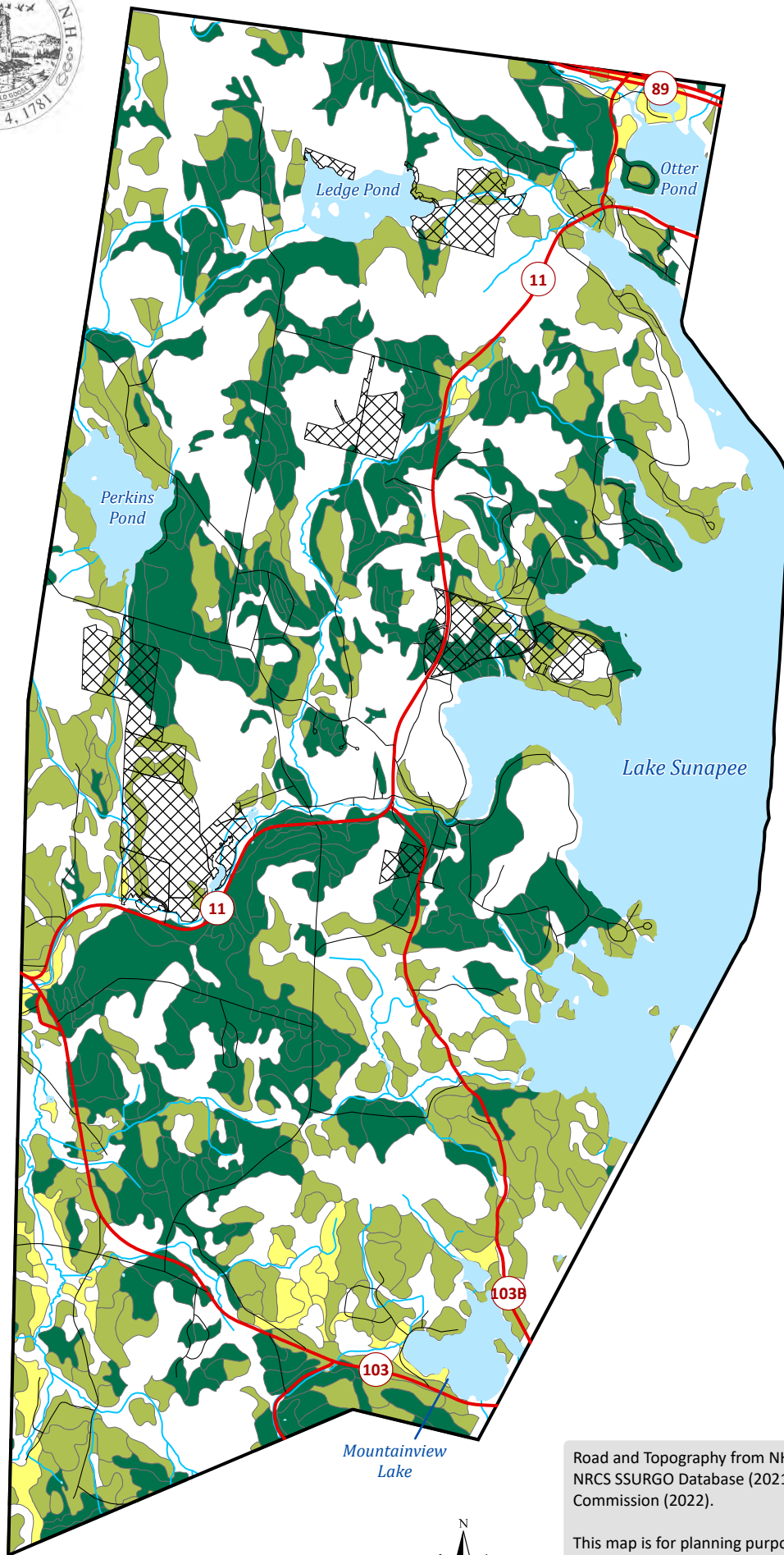
This map is for planning purposes only.

Created for the Sunapee Conservation Commission by the Upper Valley Lake Sunapee Regional Planning Commission for the 2022 Sunapee Natural Resource Inventory.





Town of Sunapee Forest Soil Productivity



NH Forest Soil Group

- Group IA - Hardwood (High Value)
- Group IB - Hardwood (Moderate Value)
- Group IC - Softwood

Water Features

- Waterbodies
- Rivers and Streams

Town Features

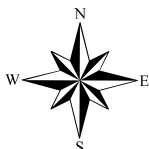
- State Roads
- Local Roads
- Town Forest

Road and Topography from NH GRANIT (2022); National Hydrography Dataset (2018); NRCS SSURGO Database (2021); Town Forest details from Sunapee Conservation Commission (2022).

This map is for planning purposes only.

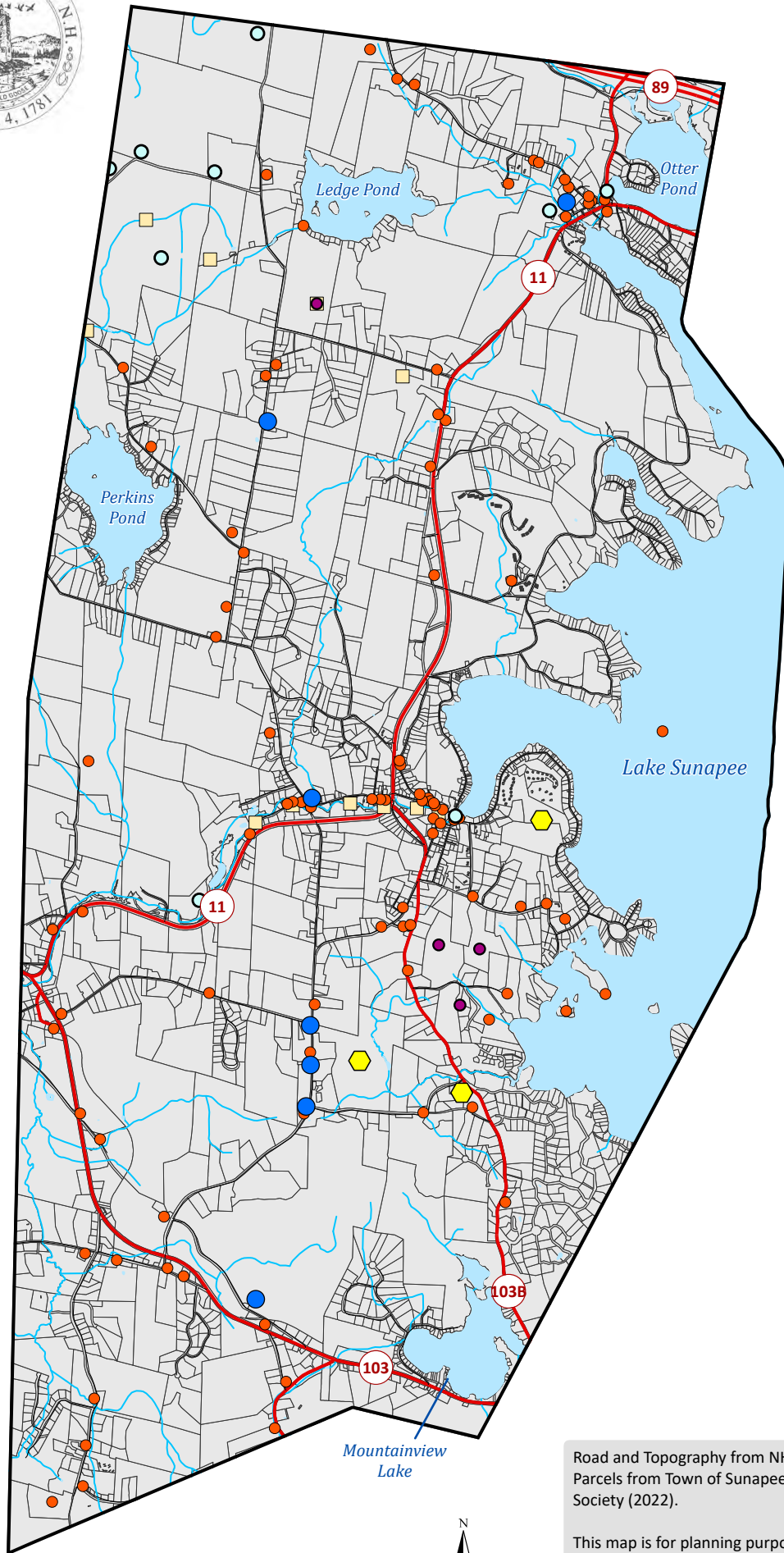
Created for the Sunapee Conservation Commission by the Upper Valley Lake Sunapee Regional Planning Commission for the 2022 Sunapee Natural Resource Inventory.

0 1 2 Miles





Town of Sunapee Culturally Historic Resources



Important Sites

- Significant Buildings
- Cellar Holes
- Significant Geological Sites
- ⬡ Named Rock Features
- Graveyards
- ⬡ Stone Dams

Water Features

- Waterbodies
- Rivers and Streams

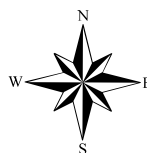
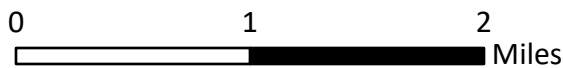
Town Features

- State Roads
- Local Roads
- Land Parcels

Road and Topography from NH GRANIT (2022); National Hydrography Dataset (2018); Parcels from Town of Sunapee (2022); Important Site details from Sunapee Historical Society (2022).

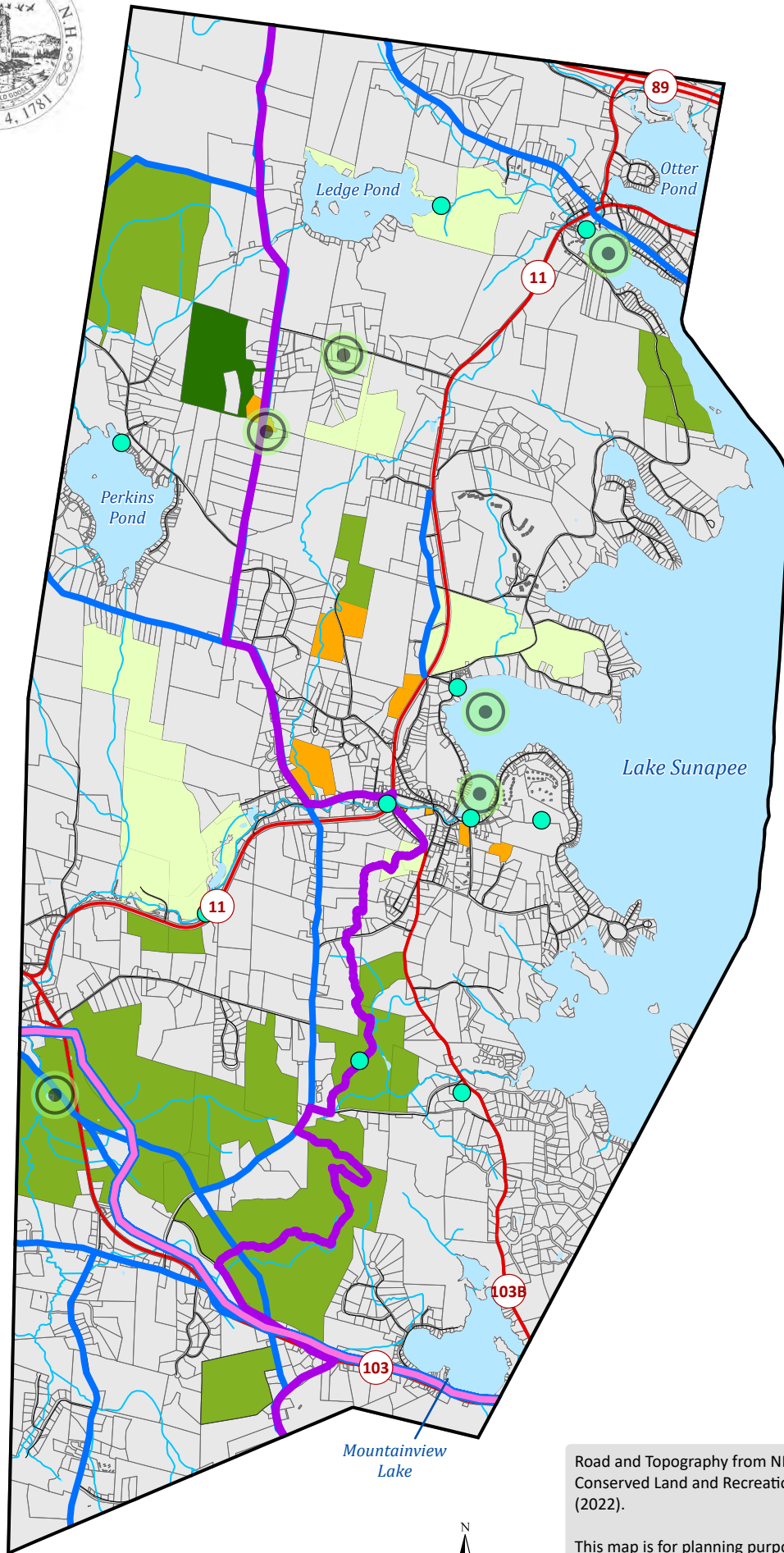
This map is for planning purposes only.

Created for the Sunapee Conservation Committee
by the Upper Valley Lake Sunapee Regional Planning Commission
for the 2022 Sunapee Natural Resource Inventory.





Town of Sunapee Recreation & Conserved Land



Recreational Resources

- Scenic Vistas
- Waterbody Access Points
- Abandoned Rail Bed Trail
- Sunapee Ragged Kearsarge Greenway
- Other Notable/Historic Trails

Conserved Land

- State Land
- Town Land
- Town Forest
- Private Conserved

Water Features

- Waterbodies
- Rivers and Streams

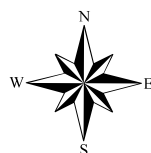
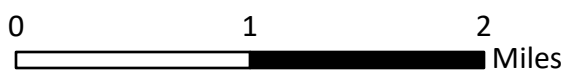
Town Features

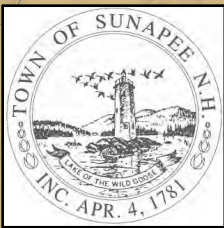
- State Roads
- Local Roads
- Land Parcels

Road and Topography from NH GRANIT (2022); National Hydrography Dataset (2018); Conserved Land and Recreation Site details from Sunapee Conservation Commission (2022).

This map is for planning purposes only.

Created for the Sunapee Conservation Commission by the Upper Valley Lake Sunapee Regional Planning Commission for the 2022 Sunapee Natural Resource Inventory.





Resiliency Network

Network Value

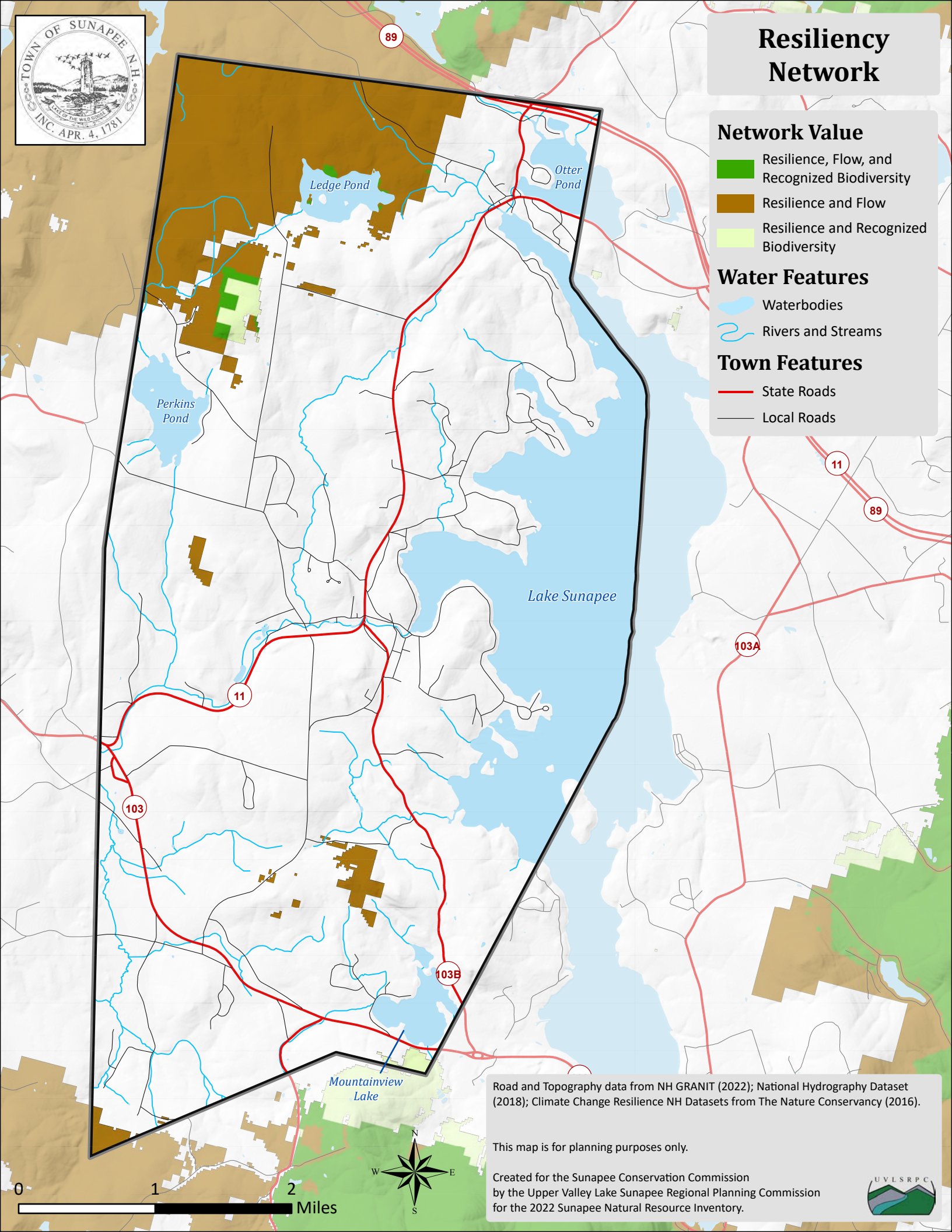
- Resilience, Flow, and Recognized Biodiversity
- Resilience and Flow
- Resilience and Recognized Biodiversity

Water Features

- Waterbodies
- Rivers and Streams

Town Features

- State Roads
- Local Roads

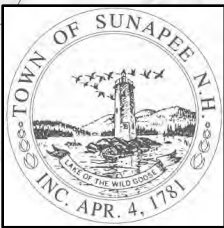


Road and Topography data from NH GRANIT (2022); National Hydrography Dataset (2018); Climate Change Resilience NH Datasets from The Nature Conservancy (2016).

This map is for planning purposes only.

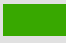

Created for the Sunapee Conservation Commission by the Upper Valley Lake Sunapee Regional Planning Commission for the 2022 Sunapee Natural Resource Inventory.







Recognized Biodiversity

Biodiversity Value

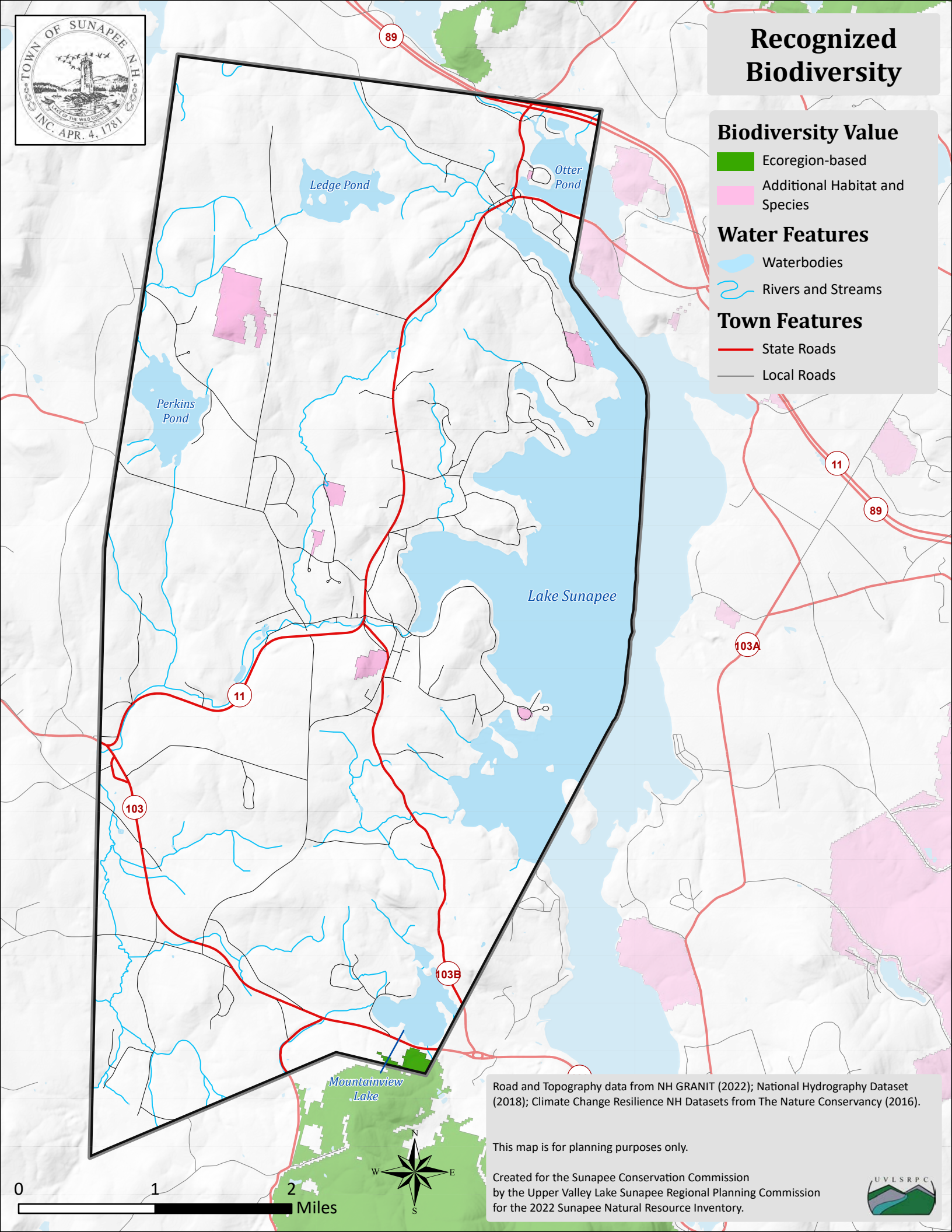
-  Ecoregion-based
-  Additional Habitat and Species

Water Features

-  Waterbodies
-  Rivers and Streams

Town Features

-  State Roads
-  Local Roads

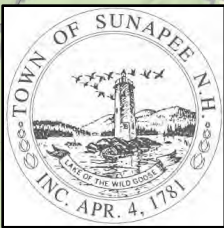


Road and Topography data from NH GRANIT (2022); National Hydrography Dataset (2018); Climate Change Resilience NH Datasets from The Nature Conservancy (2016).

This map is for planning purposes only.

Created for the Sunapee Conservation Commission by the Upper Valley Lake Sunapee Regional Planning Commission for the 2022 Sunapee Natural Resource Inventory.





Resilient Sites

Resilience Value

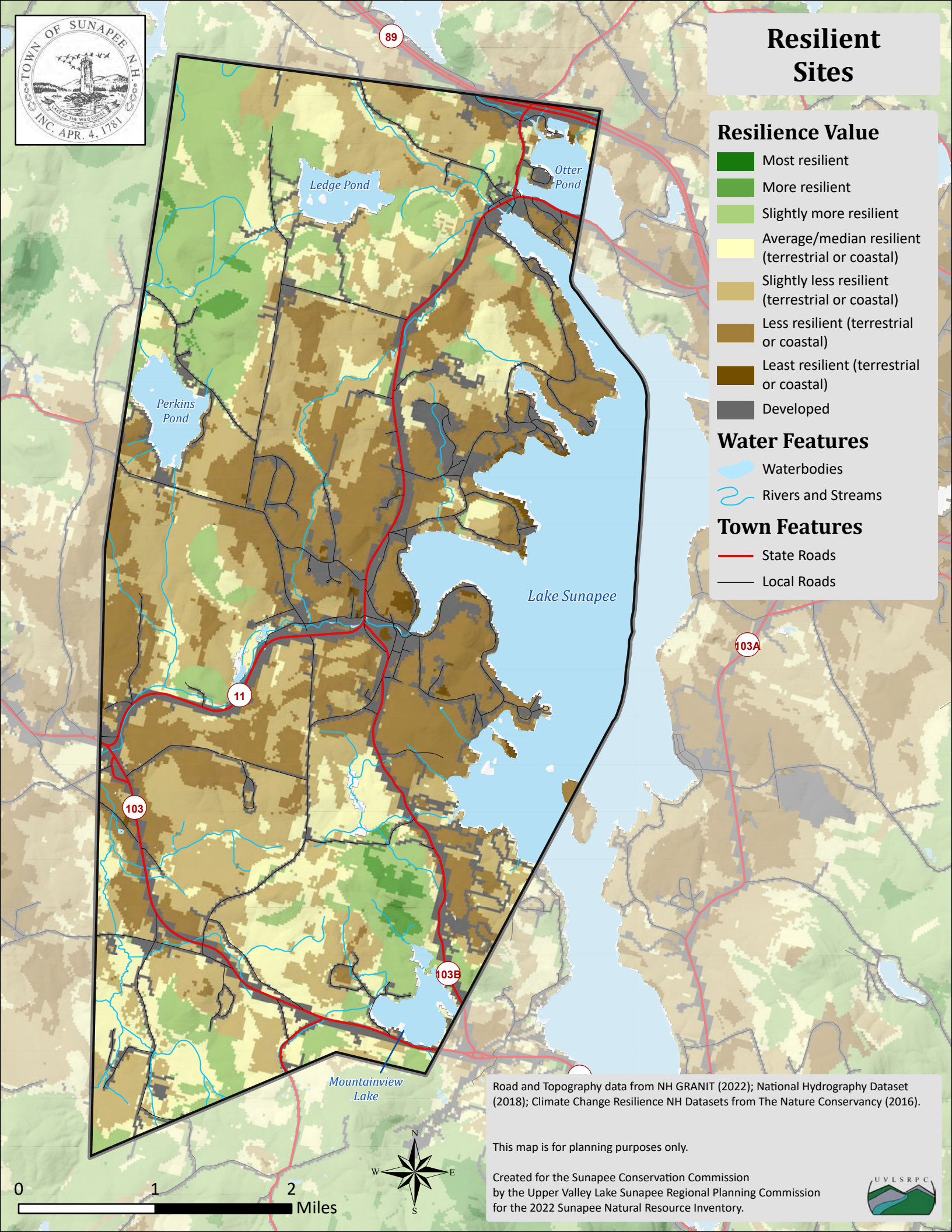
- Most resilient
- More resilient
- Slightly more resilient
- Average/median resilient (terrestrial or coastal)
- Slightly less resilient (terrestrial or coastal)
- Less resilient (terrestrial or coastal)
- Least resilient (terrestrial or coastal)
- Developed

Water Features

- Waterbodies
- Rivers and Streams

Town Features

- State Roads
- Local Roads

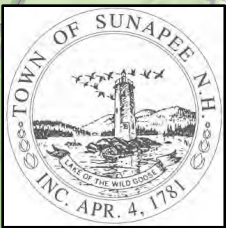


Road and Topography data from NH GRANIT (2022); National Hydrography Dataset (2018); Climate Change Resilience NH Datasets from The Nature Conservancy (2016).

This map is for planning purposes only.

Created for the Sunapee Conservation Commission by the Upper Valley Lake Sunapee Regional Planning Commission for the 2022 Sunapee Natural Resource Inventory.





Local Connectedness

Connectedness Value

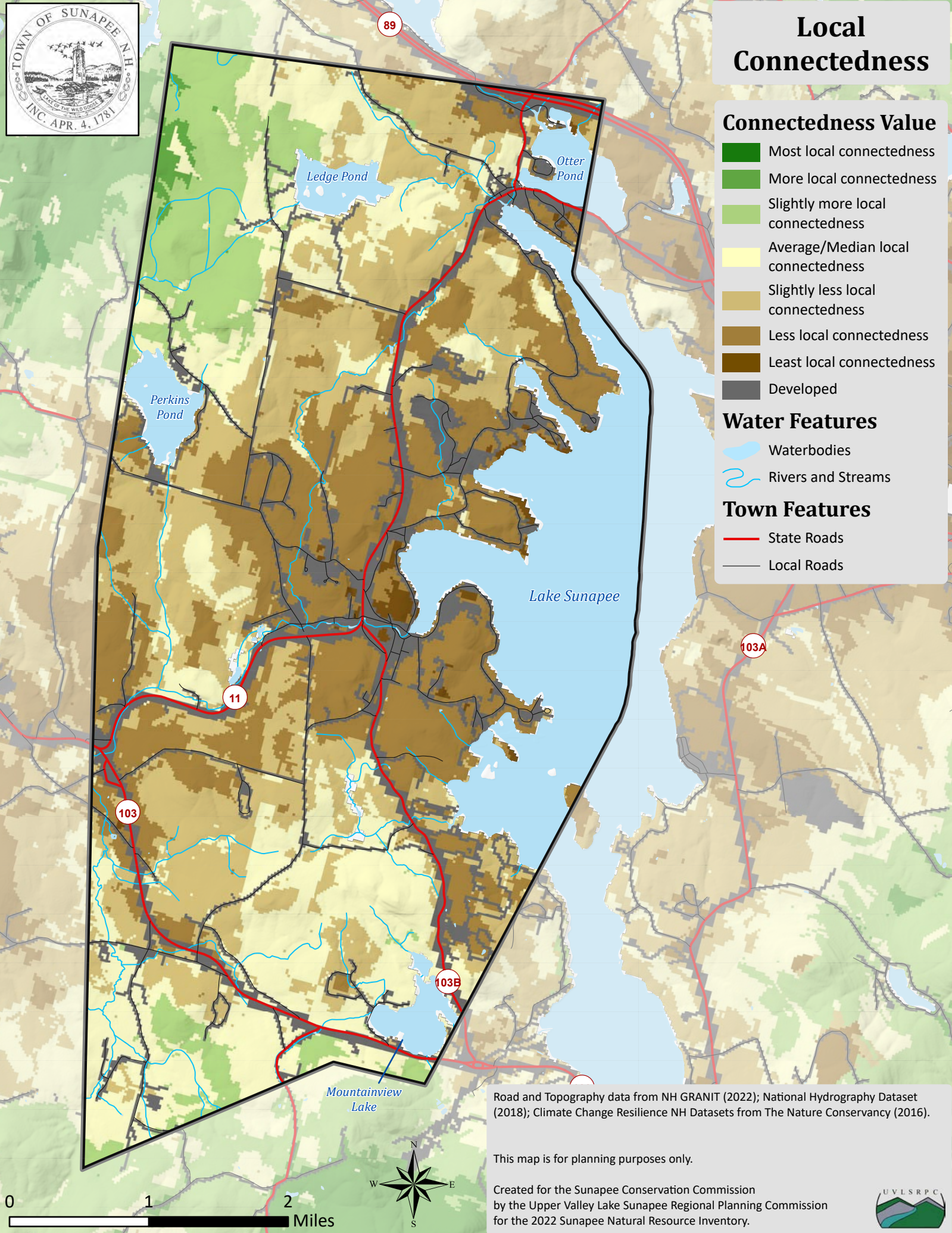
- Most local connectedness
- More local connectedness
- Slightly more local connectedness
- Average/Median local connectedness
- Slightly less local connectedness
- Less local connectedness
- Least local connectedness
- Developed

Water Features

- Waterbodies
- Rivers and Streams

Town Features

- State Roads
- Local Roads

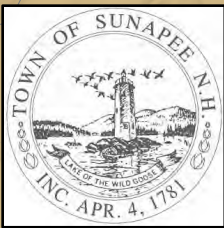


Road and Topography data from NH GRANIT (2022); National Hydrography Dataset (2018); Climate Change Resilience NH Datasets from The Nature Conservancy (2016).

This map is for planning purposes only.

Created for the Sunapee Conservation Commission by the Upper Valley Lake Sunapee Regional Planning Commission for the 2022 Sunapee Natural Resource Inventory.





Regional Wildlife Flow

Flow Concentration

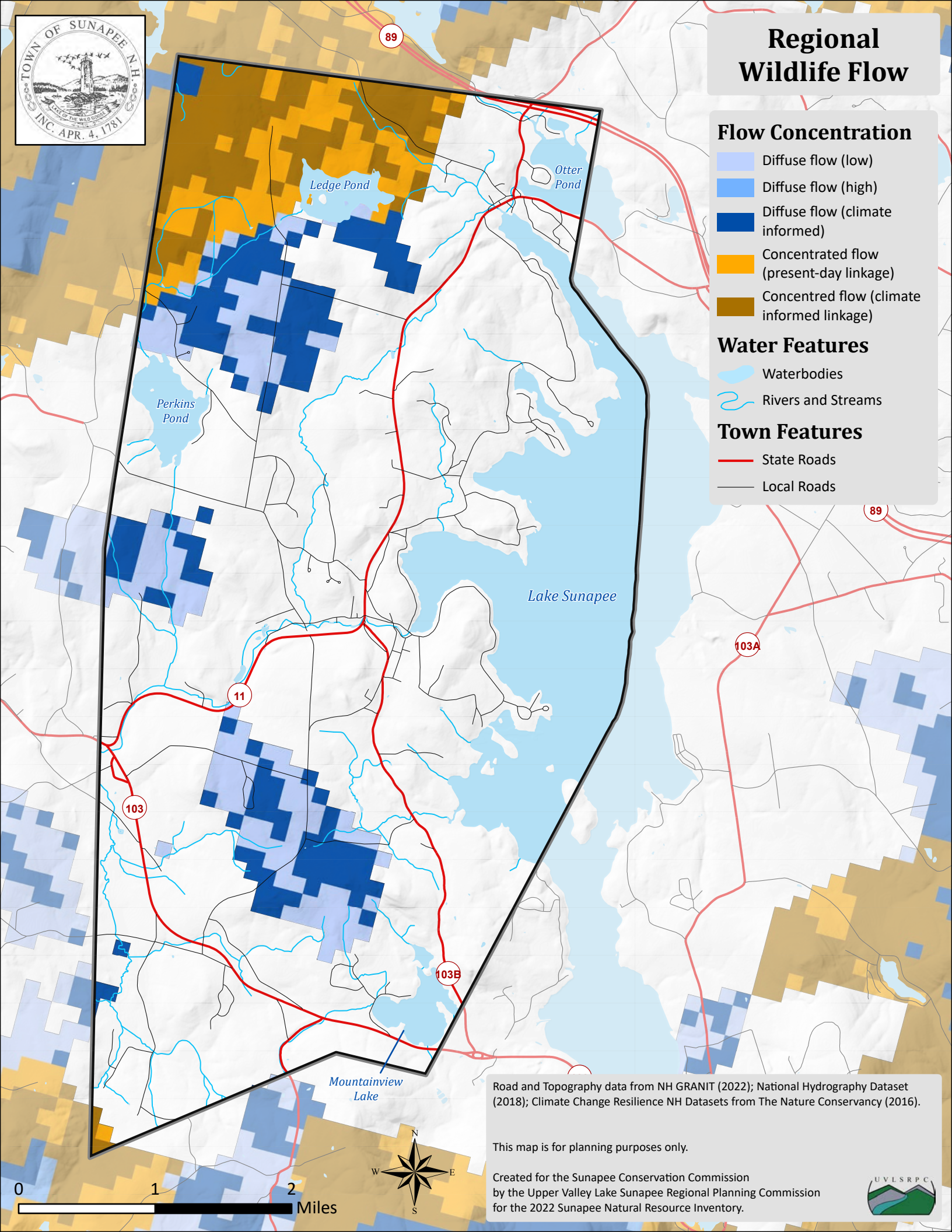
- Diffuse flow (low)
- Diffuse flow (high)
- Diffuse flow (climate informed)
- Concentrated flow (present-day linkage)
- Concentrated flow (climate informed linkage)

Water Features

- Waterbodies
- Rivers and Streams

Town Features

- State Roads
- Local Roads



Road and Topography data from NH GRANIT (2022); National Hydrography Dataset (2018); Climate Change Resilience NH Datasets from The Nature Conservancy (2016).

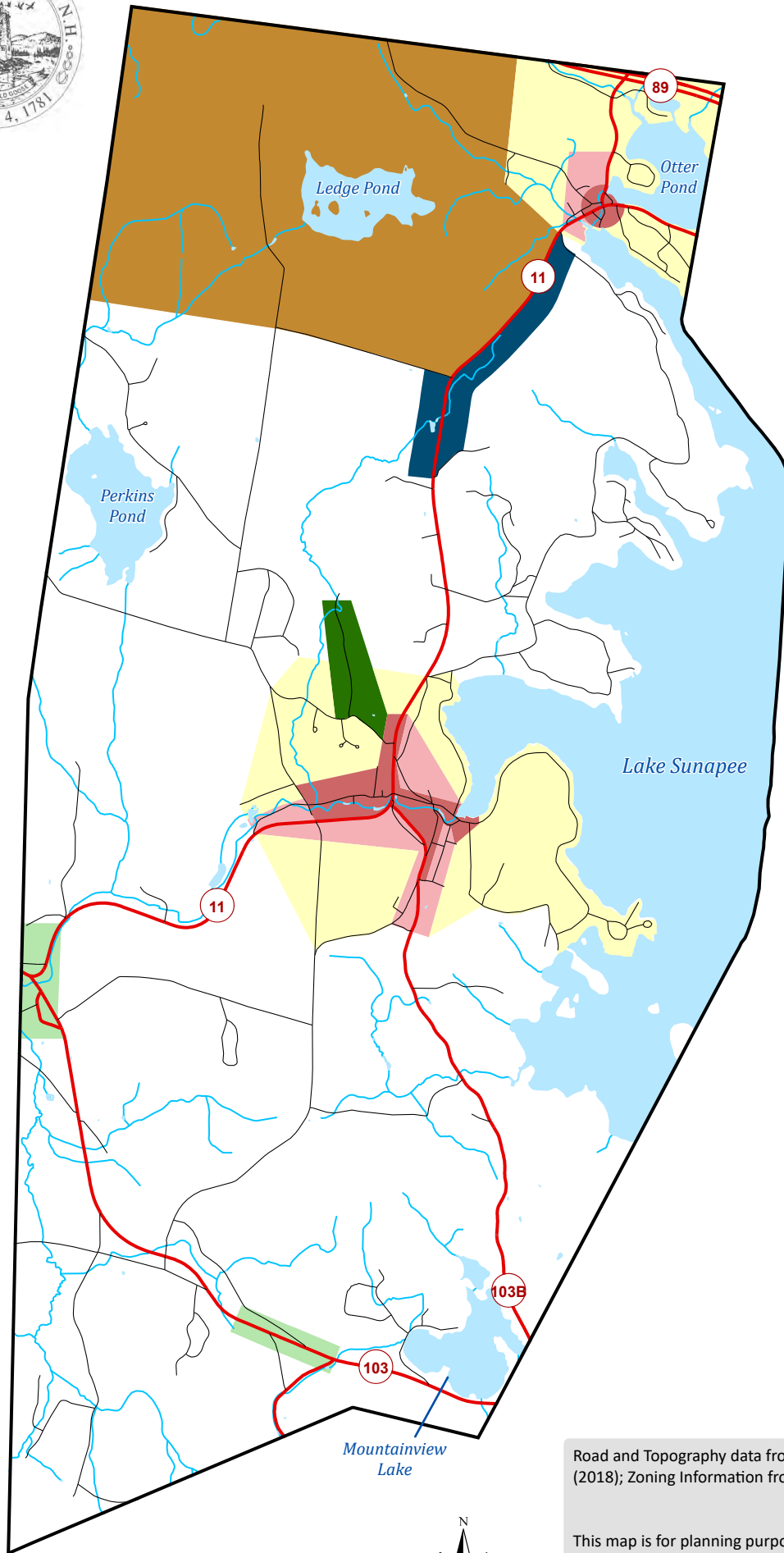
This map is for planning purposes only.

Created for the Sunapee Conservation Commission by the Upper Valley Lake Sunapee Regional Planning Commission for the 2022 Sunapee Natural Resource Inventory.





Town of Sunapee Zoning



Zoning Districts

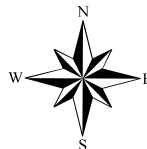
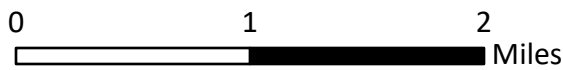
- Mixed-Use
- Mixed-Use II
- Mixed-Use III
- Residential
- Rural Lands
- Village-Commercial
- Village-Residential

Water Features

- Waterbodies
- Rivers and Streams

Town Features

- State Roads
- Local Roads



Road and Topography data from NH GRANIT (2022); National Hydrography Dataset (2018); Zoning Information from Town of Sunapee (2022).

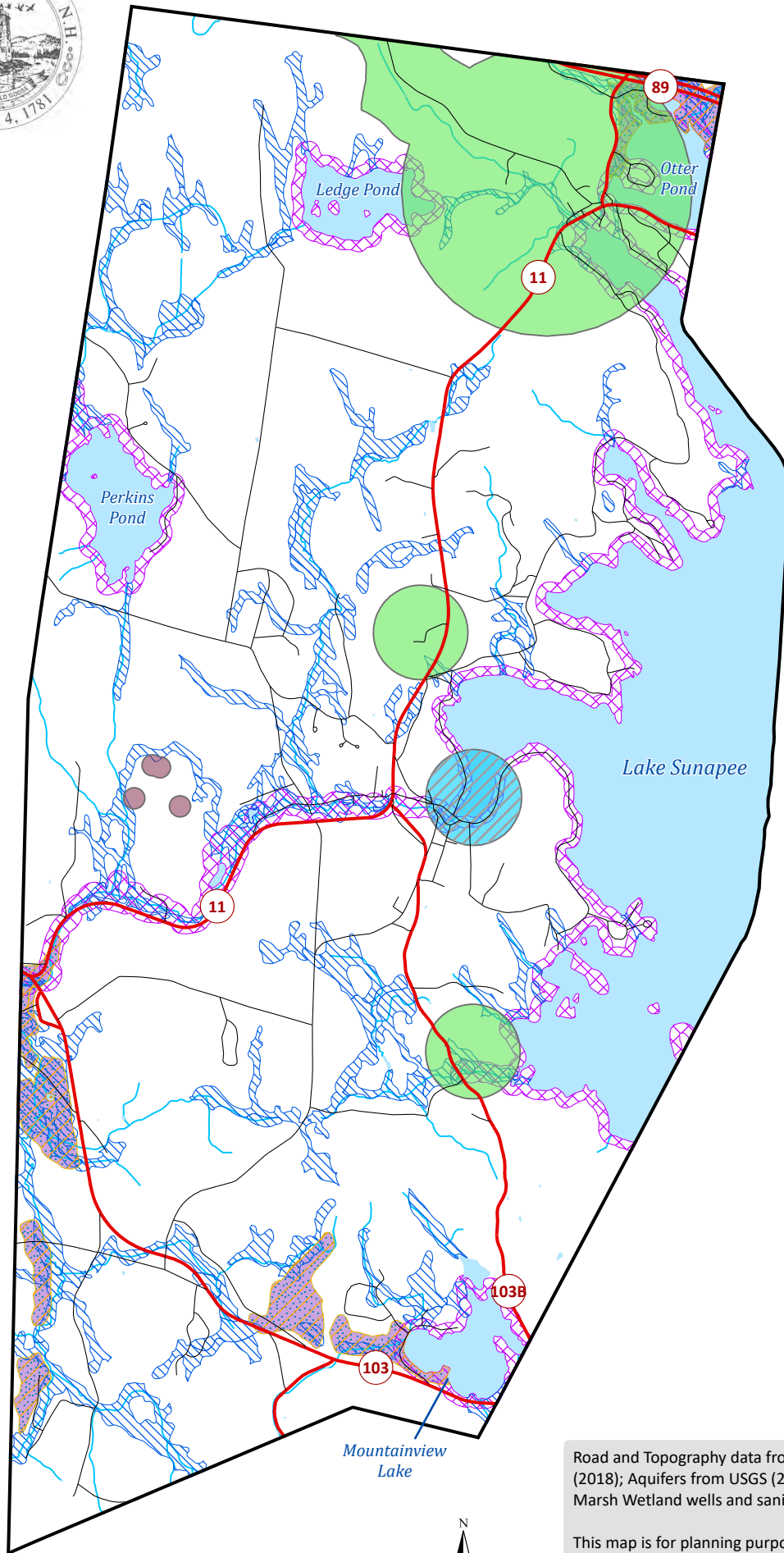
This map is for planning purposes only.

Created for the Sunapee Conservation Commission by the Upper Valley Lake Sunapee Regional Planning Commission for the 2022 Sunapee Natural Resource Inventory.








Town of Sunapee Water Protections



Protection Zones

-  Water Supply Intake Protection Areas
-  Wellhead Protection Areas
-  Wendell Marsh Well Sanitary Zones
-  Aquifer Overlay District
-  Wetlands Overlay District
-  Shoreline Overlay District

Water Features

-  Waterbodies
-  Rivers and Streams
-  Aquifers

Town Features

-  State Roads
-  Local Roads



Road and Topography data from NH GRANIT (2022); National Hydrography Dataset (2018); Aquifers from USGS (2007); Water supply details from NHDES (2022); Wendall Marsh Wetland wells and sanitary zone details from Town of Sunapee (2015)

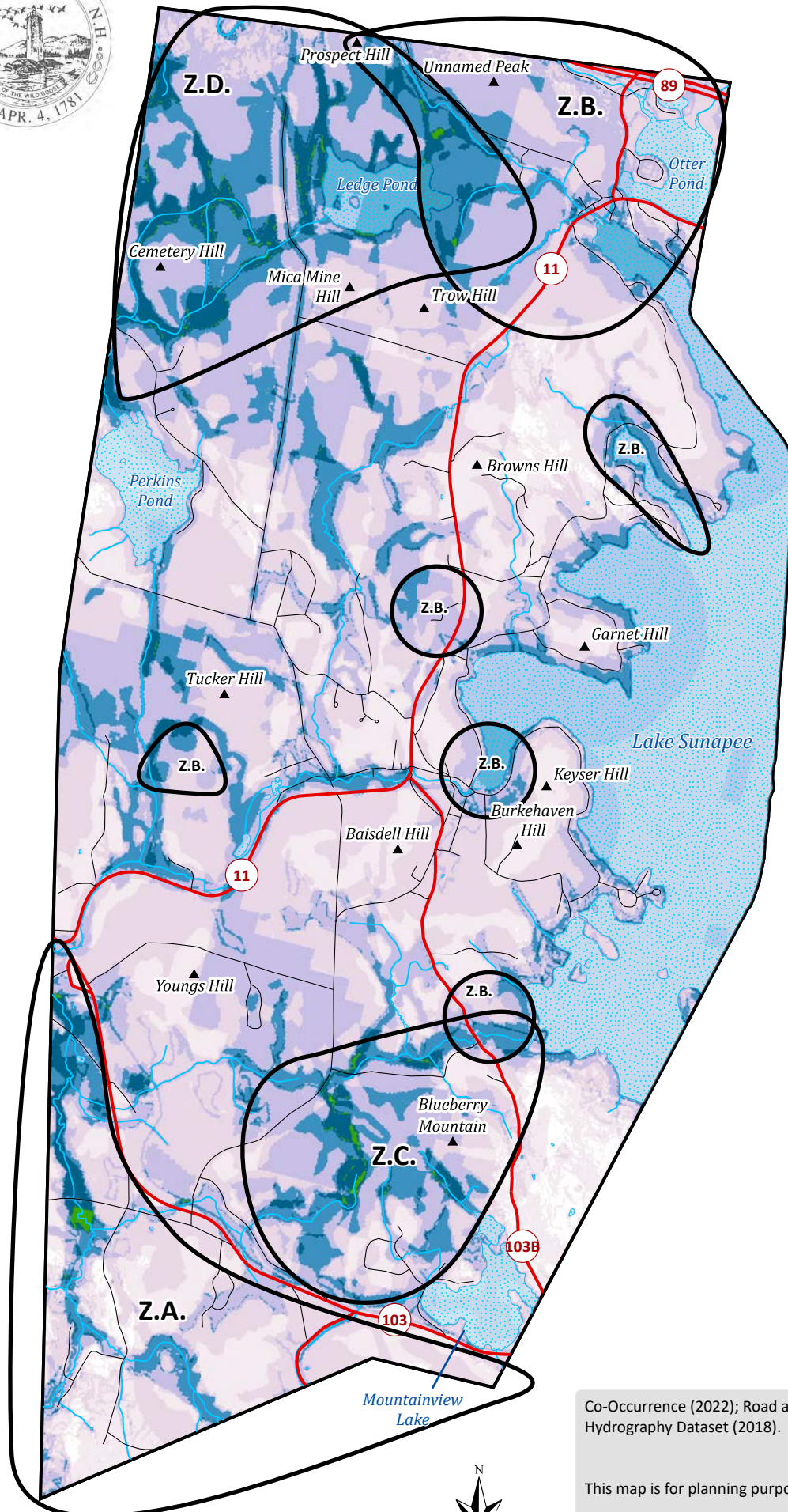
This map is for planning purposes only.

Created for the Sunapee Conservation Commission by the Upper Valley Lake Sunapee Regional Planning Commission for the 2022 Sunapee Natural Resource Inventory.





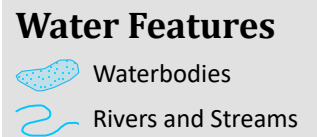
Town of Sunapee Natural Resource Co-Occurrence



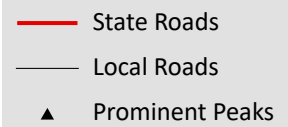
Number of Natural Resources in Area



Water Features



Town Features



Priority Zones

- Z.A. - South Sunapee
- Z.B. - Drinking Water Supply Areas
- Z.C. - Red Water Creek to Mud Pond
- Z.D. Northwest Sunapee

Note: Priority Zone Z.B. also includes other Lake Sunapee shoreland protection areas.

Co-Occurrence (2022); Road and Topography data from NH GRANIT (2022); National Hydrography Dataset (2018).

This map is for planning purposes only.

Created for the Sunapee Conservation Commission by the Upper Valley Lake Sunapee Regional Planning Commission for the 2022 Sunapee Natural Resource Inventory.

