
An Overview of the Upper Valley Lake Sunapee Council: Issues and Alternatives

Prepared for

Upper Valley Lake Sunapee Council

Office of State Planning

Prepared by

**The Thoresen Group
Planning Consultants
10 Daniel Street
Portsmouth, N.H. 03801**

CPA-NH-01-00-1009

The preparation of this report was financed in part through a Comprehensive Planning Assistance Grant from the Department of Housing and Urban Development, and the Office of State Planning, State of New Hampshire.

UVLSC DUES BY MUNICIPALITY -- FY 1976-1980*

<u>Municipality</u>	<u>1976</u>	<u>1977</u>	<u>1978</u>	<u>1979</u>	<u>1980</u>
Acworth	326	326	324	322	354
Canaan	1,364	1,352	1,404	1,426	1,465
Charlestown	2,440	(2,515)	(2,539)	(2,559)	(2,671)
Claremont ¹	(10,059)	(11,040)	(10,660)	(10,803)	(10,220)
Cornish	887	(879)	(876)	880	905
Croydon	289	215	282	294	304
Dorchester	(130)	(131)	117	(120)	132
Enfield	1,777	1,840	1,911	1,942	1,987
Goshen ²	(333)	(357)	(379)	(389)	(363)
Grafton	(317)	340	341	367	360
Grantham	277	311	313	(371)	419
Hanover	4,291	4,252	4,236	4,387	4,825
Langdon ²	(298)	(291)	(282)	(294)	(293)
Lebanon	7,450	7,905	7,797	8,145	7,850
Lempster	(271)	274	296	(338)	(335)
Lyme	(873)	868	897	884	911
Newbury ²	(414)	(465)	(517)	(522)	(610)
New London	1,544	1,552	(1,535)	(1,569)	(2,030)
Newport	4,313	4,300	4,426	(4,368)	(4,131)
Orange	118	112	110	101	104
Orford	(602)	(594)	579	600	585
Piermont ³					383
Plainfield	979	1,090	1,107	1,096	1,163
Springfield	216	224	269	269	295
Sunapee ⁴	1,405	1,398	(1,462)	(1,615)	(1,609)
Sutton ⁵	485	552	641	(625)	
Unity	500	533	531	547	(497)
Washington	209	251	248	276	283
Wilmot	391	399	420	429	423
N. H. Potential	(42,558)	(44,366)	(44,499)	(45,538)	(45,507)
N. H. Actual Dues	29,261	28,094	26,999	23,215	22,748
% of Potential Dues	68.8	63.3	60.7	51.0	50.0
Member Towns	19	20	20	16	18
Partial Members	0	0	2	2	0

*Figures enclosed by () represent potential dues of non-members; those not enclosed represent actual dues collected from members.

Footnotes follow conclusion of chart on next page.

UVLSC Dues By Municipality -- FY 1976-1980* (cont)

<u>Municipality</u>	<u>1976</u>	<u>1977</u>	<u>1978</u>	<u>1979</u>	<u>1980</u>
Hartford	4,010	(4,010)	4,010	4,010	4,010
Norwich	1,210	1,210	1,210	1,210	1,210
Thetford	880	880	880	880	880
TOTAL POTENTIAL	(48,658)	(50,466)	(50,599)	(51,638)	(51,607)
TOTAL ACTUAL REC'D	35,361	30,184	33,099	29,315	28,848
% OF POTENTIAL DUES	72.7	59.8	65.4	56.8	55.9
MEMBER TOWNS	22	22	23	19	21
PARTIAL MEMBERS	0	0	2	2	0
TOWNS IN REGION	31	31	31	31	31

*Figures enclosed by () represent potential dues of non-members; those not enclosed represent actual dues collected from members.

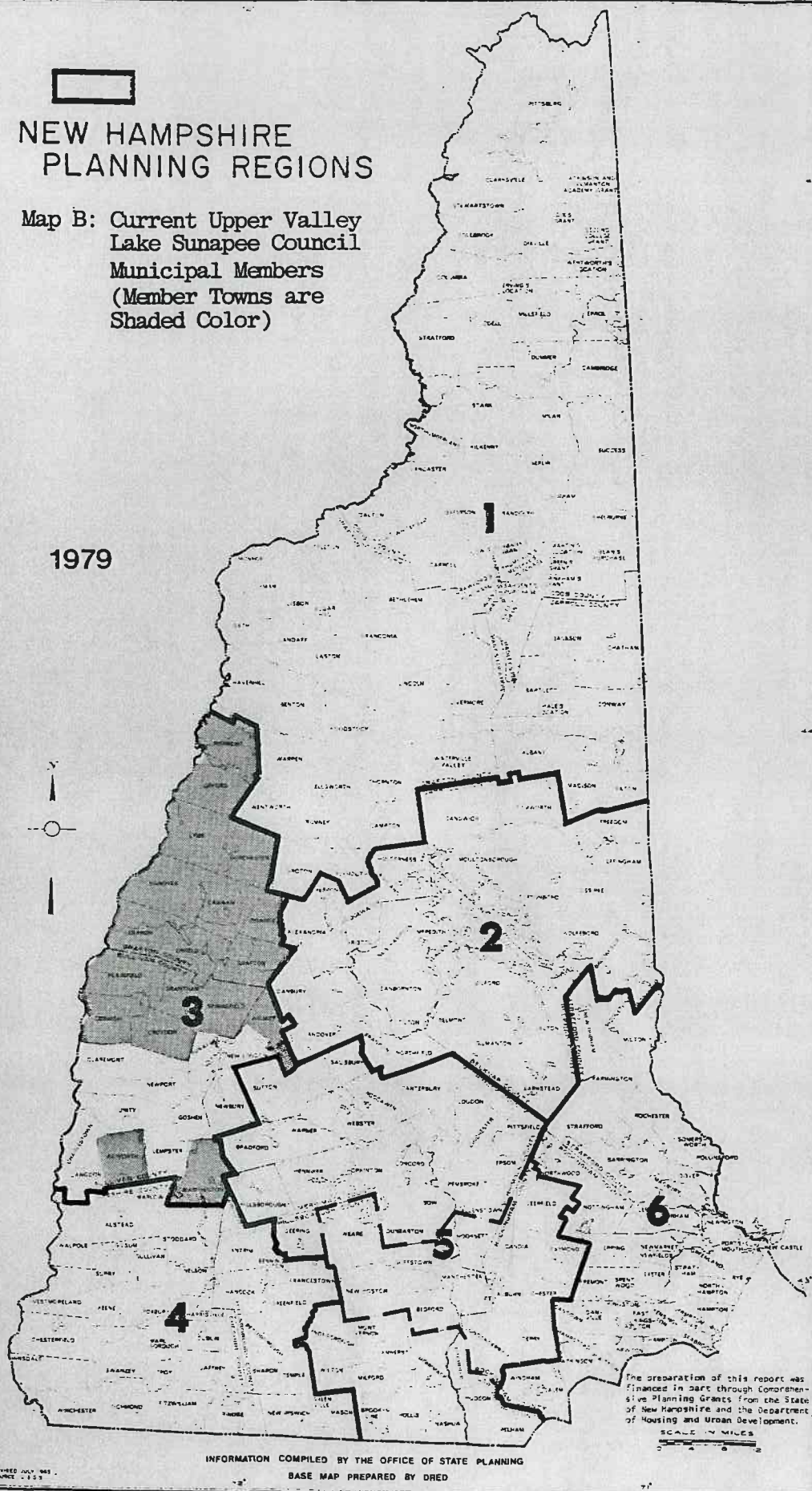
1. Claremont withdrew in FY-76; in FY-78 & 79 Claremont made partial payments of \$500 and \$1000 respectively.
2. These towns have never become members.
3. Piermont was a member of another RPC prior to FY-80 when it withdrew and joined UVLSC.
4. Sunapee made 2 partial payments of \$250 in FY-78 & 79; withdrawing from UVLSC in FY-80.
5. Sutton, after withdrawing from UVLSC in FY-79, joined another RPC in FY-80.

Source: Upper Valley-Lake Sunapee Council, 1979

NEW HAMPSHIRE PLANNING REGIONS

Map B: Current Upper Valley
Lake Sunapee Council
Municipal Members
(Member Towns are
Shaded Color)

1979



INFORMATION COMPILED BY THE OFFICE OF STATE PLANNING
BASE MAP PREPARED BY DRED

The preparation of this report was
financed in part through Comprehen-
sive Planning Grants from the State
of New Hampshire and the Department
of Housing and Urban Development.
SCALE IN MILES