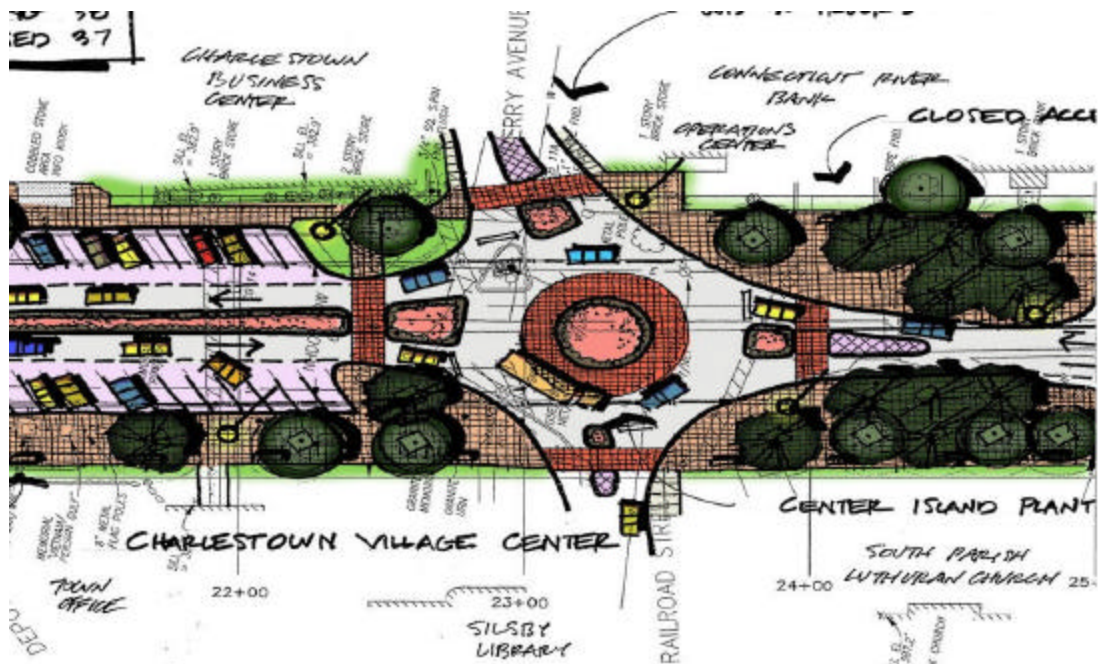


Charlestown Main Street Corridor Study Complete

The Charlestown Main Street (NH 12) Corridor Study has been completed and is available for public review at UVLSRPC. The study, commissioned by UVLSRPC with funding from the New Hampshire Department of Transportation and carried out by Dufresne-Henry, Inc., identifies needed improvements in the Main Street village area. The study outlines a conceptual plan for the corridor involving design features to improve safety and efficiency of motor vehicle traffic, create a sense of arrival at either end of the village, improve pedestrian and bicycle circulation, and enhance community aesthetics through street trees and sidewalk improvements.

Some of the proposed improvements:

- Extending curbs at mid-block locations to facilitate pedestrian crossing.
- Roundabouts to slow traffic and provide contrast in introducing motorists to a village setting.
- Landscaping to provide a more attractive setting and shade for pedestrians, and selective planting at the village center, gateways, and roundabouts to emphasize the pedestrian zone and slow traffic.
- Maintaining on-street parking for local businesses and institutions, while providing the necessary modifications to improve safety and reduce traffic and pedestrian conflicts.
- Pavement treatments, such as textured pavement, at all crosswalks on Main Street and at sidewalks in the village center. Textured pavement can lessen road noise and alert motorists that they are entering a village setting.



Proposed roundabout designed to facilitate access to proposed parking areas and a pedestrian plaza area in the core of the village