



## Inside This Issue

The Mascoma River	1-2
Around the Region	2-5
UVLSRPC Updates	6-7
Broadband Forums	8

***Want to keep up to date  
on funding sources and  
training opportunities?***

***Join our e-Bulletin!***

***Visit our website to sign  
up with your email —***

***[www.uvlsrpc.org](http://www.uvlsrpc.org)***

## River Designation Effort for the Mascoma River

The Mascoma River flows through southern Grafton County, connecting the community and village centers in Canaan, Enfield and Lebanon. The river provides drinking water, hydroelectric power and economic activity. It provides year-round recreation, offers superb wildlife habitat and connects area residents to the region's history. Once polluted, the Mascoma River now supports fishing, swimming and boating, thanks to the efforts of engaged citizens over the past several decades.

The river and its watershed now face new threats to water quality, such as invasive species, cyanobacteria blooms and storm water runoff. In 2008, citizens concerned about the river's future formed a tri-town committee to prepare a nomination for the Mascoma River to become a "designated river" under the New Hampshire Rivers Management and Protection Program (RMPP). If designated into the RMPP, the Mascoma River would join the sixteen other rivers in over 100 New Hampshire cities and towns already receiving this special recognition

and protection. This year, there are three other river committees seeking designation, as well.

RSA 483 established the RMPP in 1988 to protect certain rivers for their outstanding natural and cultural resources. There is a multi-step process for a river to become designated through this program. First, an interested organization develops a nomination that describes the river's values and characteristics and demonstrates local support for the river's designation. A successful nomination requires review and approval from the NH Department of Environmental Services (DES) Rivers Coordinator, the State Rivers Management Advisory Committee, the DES Commissioner, the State Legislature and the Governor. The nomination takes effect when the legislation passes and the Governor signs a bill to amend RSA 483 to designate the river into the RMPP.

To prepare the Mascoma River nomination, the Upper Valley Lake Sunapee Regional Planning Commission has provided assistance to the tri-town committee through a DES Source Water Protection Grant. The committee conducted extensive public outreach, making over 20 presentations to municipal boards and local organizations and hosting several public forums and events. Based on this public input, the committee decided to nominate the lower



*The Packard Hill Covered Bridge crosses the Mascoma River in Lebanon.*

## 2 Around the Region

---

### Mascoma River (continued)

section of the river, from Canaan Center to West Lebanon. The Mascoma River nomination has been reviewed and recommended by the DES Rivers Coordinator and the Rivers Management Advisory Committee. DES Commissioner Tom Burack has received the nomination materials for his review; his recommendation is expected prior to the end of 2010. State Representative Franklin Gould from Lebanon has registered a Legislative Service Request to have the Mascoma River designation bill drafted for the next legislative session (LSR #2011-H-0046-R). If successful, the river designation is expected to occur in the 2011 legislative session.

The benefits of designated rivers include: increased public awareness of the river, the formation of a volunteer local advisory committee to serve as a regional voice for the river, the development and implementation of a river management plan, and reinforcement of state protections for water quality and quantity. The local committee plays a key role in discussing and addressing river-related issues across municipal boundaries. For the Mascoma River, this inter-town dialogue is extremely valuable, as water quality must be protected on a watershed basis in order to safeguard the drinking water supply and other important uses of the river.

Shawn Donovan, member of the tri-town committee and UVLSRPC Commissioner, explains the importance of the pending Mascoma River designation, "Not since the passage of the Clean Water Act has there been an opportunity like this for communities and citizens in the Mascoma River watershed to collaborate on protecting the most important natural resource we have."

For more information on the RMPP and the Mascoma River nomination, please call Rachel at the Commission or visit:

<http://uvlsrpc.org/MascomaRiver.html> or  
<http://des.nh.gov/organization/divisions/water/wmb/rivers/index.htm>

### Broadband Mapping Update



**New Hampshire Broadband Mapping Program**

UVLSRPC is partnering with the University of New Hampshire, the New Hampshire Department of Resources and Economic Development and the state's regional planning commissions for the New Hampshire Broadband Mapping Program.

The mapping phase of the project, which began earlier this year, involves the mapping of service areas of the seventy-plus Internet Service Providers in the state. UNH has been taking the lead on this aspect of the project, working directly with the providers. The regional planning commissions are involved in a second aspect of the mapping phase: documenting the Internet access of individual community facilities that provide important government or community services.

Preliminary results for the UVLSRPC region show that the majority of community facilities have some type of broadband Internet access, defined as 786 kbps downloading and 200 kbps uploading. However, there are five communities where the town offices still rely on dial-up and four other town offices that use a satellite connection as the sole option for broadband Internet service. There is also demand for faster service, with 181 facilities indicating they would like faster service within the next five years and 59 responding that the service is adequate.

UVLSRPC encourages local citizens and business owners to get involved in the New Hampshire Broadband Mapping Program. Individuals can "Take the Speed Test" at [www.iwantbroadbandnh.org](http://www.iwantbroadbandnh.org). The speed test determines the speed of any individual Internet connection; this information will help verify records from the service providers. UVLSRPC is also hosting two community forums in November 2010 to provide an update on this project; see pg. 8 for details.

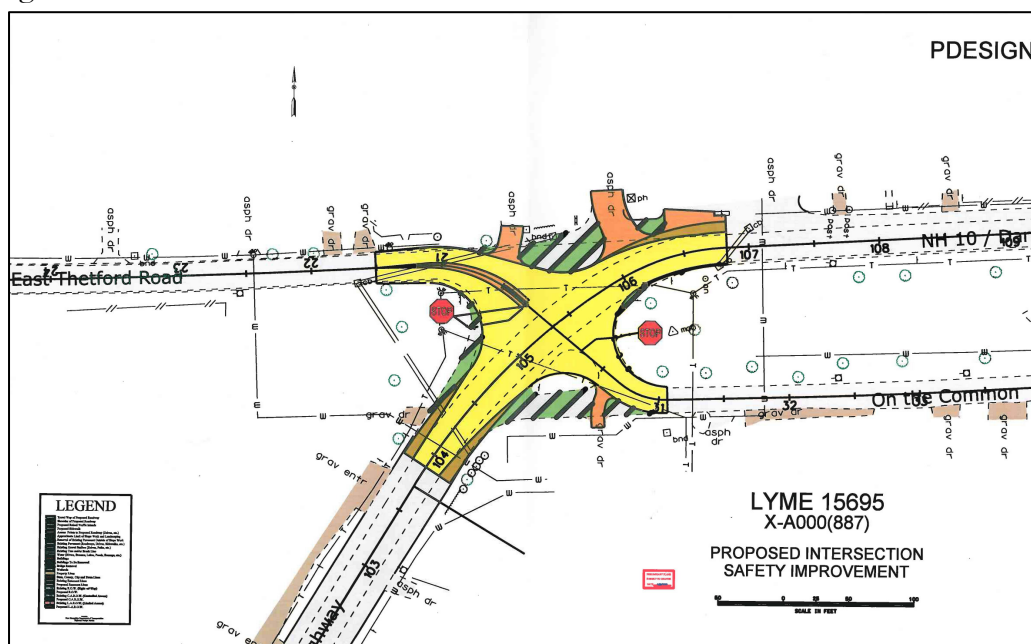
## Downtown Lyme Intersection to get a Makeover for Safety

The intersection of NH Route 10/East Thetford Road in Lyme has long been a safety concern for town officials. The expansive, unmarked pavement at the intersection creates confusion for drivers and presents problems for the New Hampshire Department of Transportation (NHDOT) District II maintenance crew tasked with clearing snow. The geometry of the intersection facilitates speeding, especially for drivers turning onto East Thetford Road from NH Route 10 southbound, and a number of curb cuts at the intersection, including the local park-and-ride facility, create additional conflict points for traffic.

Over the course of the spring, UVLSRPC staff facilitated a process to build community consensus on a series of safety improvements at the intersection. During that process, Lyme town officials, businesses and abutters of the intersection worked closely with staff engineers from the NHDOT Bureau of Highway Design to develop a design for improvements at the intersection that not only improve safety, but fit the unique and historic context of Lyme's village center. Over the course of three community meetings, the town and NHDOT reached consensus on the design shown in the figure below.

As the design shows, the pavement in front of the park-and-ride facility and Mascoma Bank building will be removed and replaced with a planted "bump out." In the future, this reclaimed space could also be used to add capacity to the town's popular park-and-ride facility. On the Common will be shifted slightly to the northeast to align with East Thetford Road, and the existing On the Common median will be removed. This pavement removal and approach reconfiguration will result in a more traditional 4-way intersection where drivers will be forced to slow down to take a right from NH Route 10 southbound onto East Thetford Road. A small, landscaped median on East Thetford will further calm traffic and provide a refuge for pedestrians, particularly children from the nearby Lyme Village School, crossing East Thetford Road.

The \$60,000 project will be funded by the federal Highway Safety Improvement Program and will be constructed in the spring of 2011. For more information about this project, call Nate at the Commission or visit: <http://www.nh.gov/dot/projects/lyme15695/index.htm>.



*Design for the downtown Lyme intersection of Route 10 and East Thetford Road.*



### NH Route 12 Planning Process Receives National Award

---



*NH Route 12 between Charlestown and Walpole in Sullivan and Cheshire Counties parallels the Connecticut River.*

For the past two years, UVLSRPC staff has facilitated a process between the New Hampshire Department of Transportation and the towns of Charlestown and Walpole to build consensus on a design for the much-needed reconstruction of NH Route 12 in the two communities. That process is now being recognized with an “Excellence in Regional Transportation Award” from the National Association of Development Organizations (NADO). The award will be presented to Nate Miller at NADO’s National Rural Transportation Peer Learning Conference in October.

The process, called Context Sensitive Solutions (CSS), was the first of its kind for a rural corridor in New Hampshire. Context Sensitive Solutions is a “collaborative approach that involves all stakeholders to develop transportation infrastructure that fits its physical setting and preserves scenic, aesthetic, historic, and environmental resources, while maintaining safety and mobility.” In the case of NH Route 12, abutters, town officials, school officials, business owners, environmental interest groups, interested citizens, and two regional planning Commissions (UVLSRPC and SWRPC) worked cooperatively with the NHDOT to develop and evaluate a series of design alternatives for the project. Nate Miller of UVLSRPC acted as the convener and facilitator of the process.

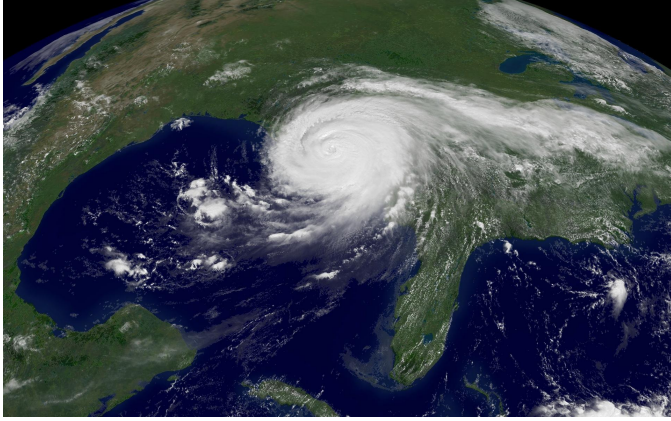
The culmination of the process was, in October 2009, when the group reached consensus on a “preferred alternative” for construction. The preferred alternative will see four-foot shoulders added along the entire length of the three-mile long project to improve safety. The existing cable guardrail will be removed and upgraded, and additional recreational pull-offs will be incorporated to complement the road’s status as a National Scenic Byway. To accommodate the new shoulders and mitigate concerns about continued Connecticut River erosion, both NH Route 12 and the adjacent New England Central Railroad line will be moved away from the Connecticut River in the northern and southern sections of the project area. Construction on the \$15-\$20 million project is expected to begin during the 2012 season.

For more information about this project, visit: <http://www.nh.gov/dot/projects/walpole14747/index.htm>



*NH Route 12, as it exists today, is sandwiched between the Connecticut River, an active railroad, and Fall Mountain. The road presents unique safety and environmental concerns.*

## Town of Springfield Completes Emergency Operations Plan



The Town of Springfield received a grant from the NH Homeland Security and Emergency Management Division this year to develop an Emergency Operations Management Plan. The Town organized a Committee consisting of their Emergency Management Director and representatives from various town departments as well as citizen volunteers. The Town hired the Upper Valley Lake Sunapee Regional Planning Commission to assist them in developing this plan. Emergency Operations Management Plans are required by the State to be eligible for several hazard mitigation or emergency management grants.

The Springfield Emergency Operations Plan is designed to address the response to consequences of any disaster or emergency situation that would affect the population or property within Springfield. The plan is applicable to natural disasters such as earthquakes, hurricanes, and tornadoes; human-made incidents such as civil disturbances; and technological situations such as hazardous materials incidents and terrorism.

The plan describes the basic mechanisms and structures by which Springfield would respond to potential or actual emergency situations. To facilitate effective response operations, the plan

incorporates a functional approach that groups the types of assistance to be provided into Emergency Support Functions or ESFs (such as communications and alerting, law enforcement, mass care & shelter, transportation, etc.) Each ESF is assigned a primary or co-primary agency, which has been selected based upon statutory authority, current roles and responsibilities, resources, and capabilities within the particular functional area. Other agencies have been designated as support agencies for one or more of the ESF(s) based upon their expertise, resources, and capabilities to support the functional areas. The primary agency is responsible for developing and maintaining the ESF documents and for coordinating related tasks during emergency operations.

It is the intention of Springfield to maintain compliance with the National Incident Management System current guidelines. Springfield emergency response operations will be organized and managed under the Incident Command System.

The primary purpose of the plan is to initiate, coordinate, and sustain an effective local response to disasters and emergency situations. Secondary to this is to make each organization and department aware of its responsibility in emergency operations. This plan, upon being implemented by the town government, will provide the basis for coordinating protective actions prior to, during and after any type of disaster.



## 6 UVLSRPC Updates

### UVLSRPC Commissioners

**Acworth:** Laurence Williamson

**Charlestown:** Steven Smith

**Claremont:** Bernard Folta  
John Marini

**Cornish:** William Lipfert  
J.Cheston Newbold

**Croydon:** Willis Ballou, Jr.

**Dorchester:** William Trought

**Enfield:** Dan Kiley  
Steven Schneider

**Grafton County:** Ken Morley

**Grantham:** Thain Allan

**Hanover:** Katherine Connolly  
William Dietrich

**Lebanon:** Shawn Donovan  
Larry LeClair  
Joan Monroe

**Lempster:** Terry Spada

**Lyme:** Dan Brand  
Paul Mayo

**New London:** Peter Stanley

**Newbury:** Nancy Marashio  
Claire Vannatta

**Newport:** Jeffrey Kessler

**Orange:** Jay Heinrichs

**Orford:** Paul Dalton

**Piermont:** Helga Mueller

**Plainfield:** James Taylor  
Richard Winters

**Springfield:** Kevin Lee

**Sullivan County:** Jeff Barrette

**Sunapee:** Aaron Simpson  
Stephen White

**Washington:** John Sheehy

**At-Large Members:**  
Peter Gregory  
Marc Scarano

### Upcoming Meeting: Full Commission Meeting

The Full Commission will meet on Wednesday, October 20 at 6:00 pm in the UVLSRPC Conference Room at 10 Water Street in Lebanon. The guest speaker will be Rachel Ruppel, UVLSRPC's GIS Analyst, who will provide an update on the New Hampshire Broadband Mapping Program.

### Our offices have moved!



If you have not seen our new office, please stop by 10 Water Street, Suite 225 and have a look around. Our new offices are located in the Whitman Communications building, which was formerly an American Woolen Company mill. We are open from 8:00 am to 5:00 pm Monday - Friday.

### Energy Efficiency Planning Assistance Available

We are pleased to be part of the statewide collaborative to provide technical assistance to municipalities in our region and invite you to participate in this two-year program. Energy efficiency is quickly becoming an important component in local, regional and national planning initiatives. Under this program, commonly known as ETAP, we will be providing energy planning technical assistance free of charge. We will be drawing from our local expertise and the broader technical expertise and resources of the project team: CLF Ventures, Peregrine Energy Group, and Clean Air-Cool Planet.

Under the ETAP program we will be able to provide technical assistance on a variety of topics on a first come, first served basis:

- Grant writing assistance
- Energy inventories and audits
- Energy master plans
- Capital improvement plans for energy efficiency
- Development of procurement documents and service procurement support

We encourage all municipalities to participate in this program regardless of where they are in the energy planning spectrum.

If your community is interested in energy efficiency planning through this program, please contact Mike to discuss the possibilities for your city or town.



## UVLSRPC Assists DES with Stormwater Guide



**A Shoreland Homeowner's Guide  
to Stormwater Management**  
~ *protecting your home & environment* ~

NH Department of Environmental Services  
29 Hazen Drive, Concord, NH 03301 • 603.271.3503 • [www.des.nh.gov](http://www.des.nh.gov)

Earlier this year, the New Hampshire Department of Environmental Services (DES) published "A Shoreland Homeowner's Guide to Stormwater Management." This guide was developed in collaboration with UVLSRPC and DES staff, with funding secured by UVLSRPC from the American Recovery and Reinvestment Act under Section 604(b) of the Clean Water Act.

The Homeowner's Guide presents nine installations suitable for a residential setting that prevent stormwater runoff from entering our state's lakes and rivers. The guide describes the purpose, materials needed, installation and maintenance of rain gardens, water bars, dripline trenches and other simple and cost-effective practices that shoreland homeowners can install at their property. Also included is general information about what permits, if any, are required.

The guide is available online at New Hampshire Department of Environmental Services.



## Mailing List Updates

**Help us keep our mailing list up to date!**

Let us know if:

- your address needs to be updated
- your name is misspelled, or
- you'd rather receive the newsletter via email.

Send us a note via fax: 603-448-0170

Email: [info@uvlsrpc.org](mailto:info@uvlsrpc.org)

Mail: 10 Water Street, Suite 225, Lebanon, NH 03766

## UVLSRPC STAFF

**Christine Walker**  
Executive Director  
[cwalker@uvlsrpc.org](mailto:cwalker@uvlsrpc.org)

**Jennifer Devost**  
Associate Director  
[jdevost@uvlsrpc.org](mailto:jdevost@uvlsrpc.org)

**Nate Miller**  
Senior Planner  
[nmiller@uvlsrpc.org](mailto:nmiller@uvlsrpc.org)

**Michael McCrory**  
Senior Planner  
[mmccrory@uvlsrpc.org](mailto:mmccrory@uvlsrpc.org)

**Rachel Ruppel**  
GIS Analyst/Planner  
[rruppel@uvlsrpc.org](mailto:rruppel@uvlsrpc.org)

**Vickie Davis**  
Planner  
[vdavis@uvlsrpc.org](mailto:vdavis@uvlsrpc.org)

**Patricia Crocker**  
Planner  
[pcrocker@uvlsrpc.org](mailto:pcrocker@uvlsrpc.org)

**Chris Courtemanche**  
Administrative Assistant  
[info@uvlsrpc.org](mailto:info@uvlsrpc.org)

The RPC Newsletter is periodically mailed to our member communities, regional planning offices, and other interested folks. If you would like to join our mailing list or if you would like to have your contact information updated, please call us or e-mail us at [info@uvlsrpc.org](mailto:info@uvlsrpc.org)





Upper Valley Lake Sunapee  
Regional Planning Commission  
10 Water Street, Suite 225  
Lebanon, New Hampshire 03766  
<http://www.uvlsrpc.org>

Address Service Requested

---

**Please join us at the:**



**New Hampshire Broadband Mapping Program  
Community Broadband Forums**



**Tuesday, November 2, 2010 - 6:00 pm – 8:00 pm**

**River Valley Community College, Room 226, 1 College Dr., Claremont, NH  
and**

**Thursday, November 18, 2010 - 5:00 pm – 7:00 pm**

**Newport Town Offices, 15 Sunapee St., Newport, NH**

***- An update on broadband Internet initiatives in our region and around NH -***

Co-sponsored by: University of New Hampshire / GRANIT, Upper Valley Lake Sunapee  
Regional Planning Commission and NH Department of Resources and Economic Development

**For more information, visit [www.iwantbroadbandnh.org](http://www.iwantbroadbandnh.org), [www.uvlsrpc.org](http://www.uvlsrpc.org), or call (603) 448-1680**

