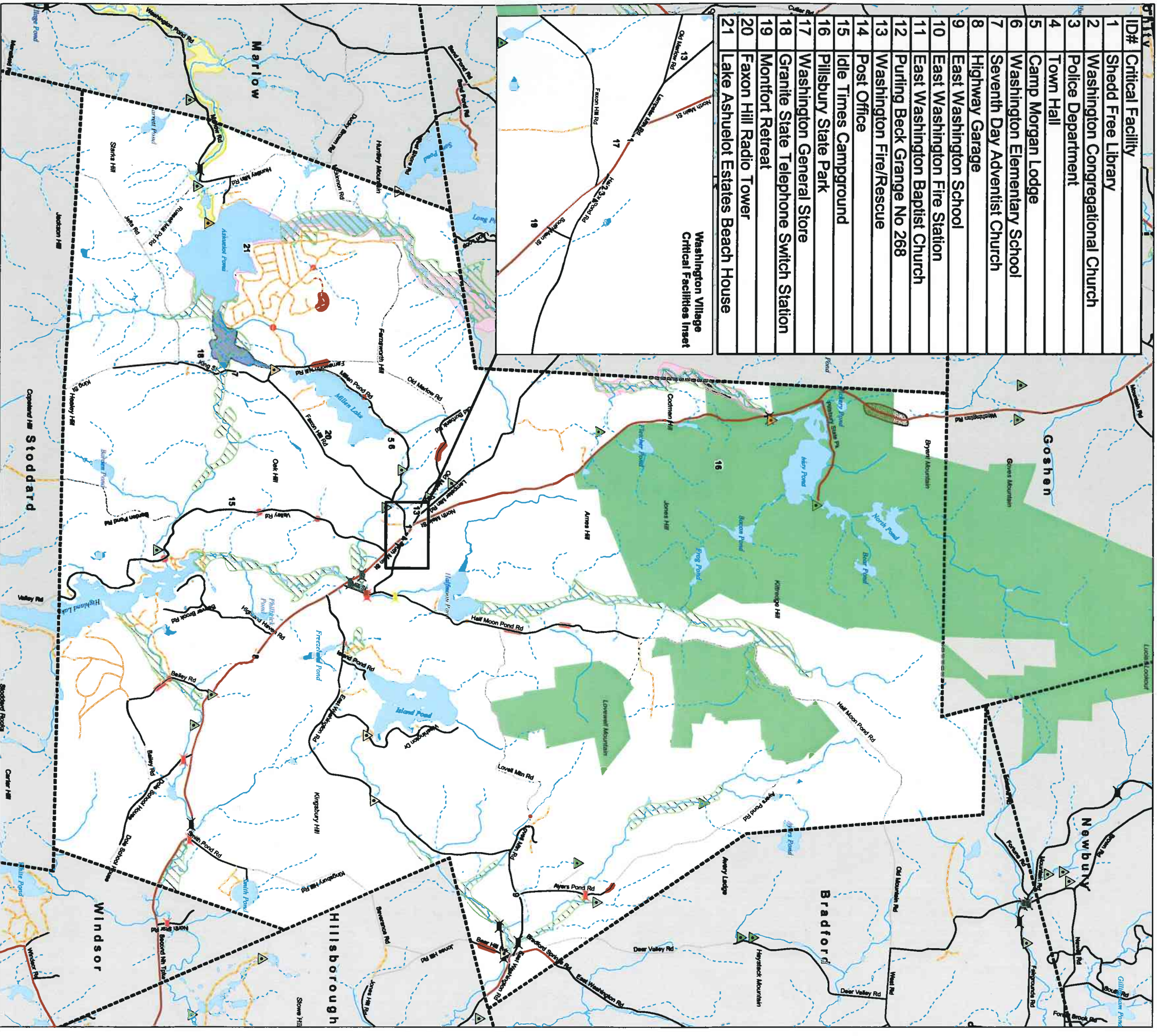


ID#	Critical Facility
1	Shedd Free Library
2	Washington Congregational Church
3	Police Department
4	Town Hall
5	Camp Morgan Lodge
6	Washington Elementary School
7	Seventh Day Adventist Church
8	Highway Garage
9	East Washington School
10	East Washington Fire Station
11	East Washington Baptist Church
12	Puring Beck Grange No 268
13	Washington Fire/Rescue
14	Post Office
15	Idle Times Campground
16	Pillsbury State Park
17	Washington General Store
18	Granite State Telephone Switch Station
19	Montfort Retreat
20	Faxon Hill Radio Tower
21	Lake Ashuelot Estates Beach House

Washington Village  
Critical Facilities Inset



## Hazards and Critical Facilities Map Washington, NH



Data drawn from NH GRANIT, the state's GIS dashboard, and represents the best available data. Sullivan County floodplains from FEMA, Bridge condition from NH DOT, 2008. Dam inundation data from NH DES Dam Bureau, date varies. Localized hazards and critical facilities developed by Washington Hazard Mitigation Committee, digitized by UVA-SRPC, 2009.

Data Source Disclaimer: Digital data in NH GRANIT represent the efforts of the contributing agencies to record information from the cited source materials. Complex Systems Research Center (CSRC), under contract to the Office of Energy and Planning (OEP), and in consultation with cooperating agencies, maintains a continuing program to identify and correct errors in these data. OEP, CSRC, and the cooperating agencies make no claim as to the validity or reliability or to any implied uses of these data.

Legend	
Critical Facilities	Localized Hazards
Town Lines	Dam Failure
Dams by Hazard Class	Roadway Erosion
High hazard potential	Culvert Erosion
Significant hazard potential	Landslide
Low hazard potential	Flood Zones, 100-Year Floodplains
Non Menace	A
Ruins, removed, breached, notbuilt, or exempt	AE
Bridges by Condition	Waterbodies
Red List: More Frequent Inspection Required	Lake, Pond, Reservoir
Structurally Deficient or Functionally Obsolete	Perennial Streams
Other Bridges	Intermittent Streams
Roads	Ashuelot Pond Dam Flood Area (245-05)
State	Millen Lake Dam Flood Area (245-04)
Local	May Pond Dam Flood Area (245-01)
Not Maintained	Pillsbury State Park
Private	Neighboring Towns