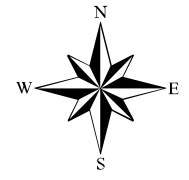
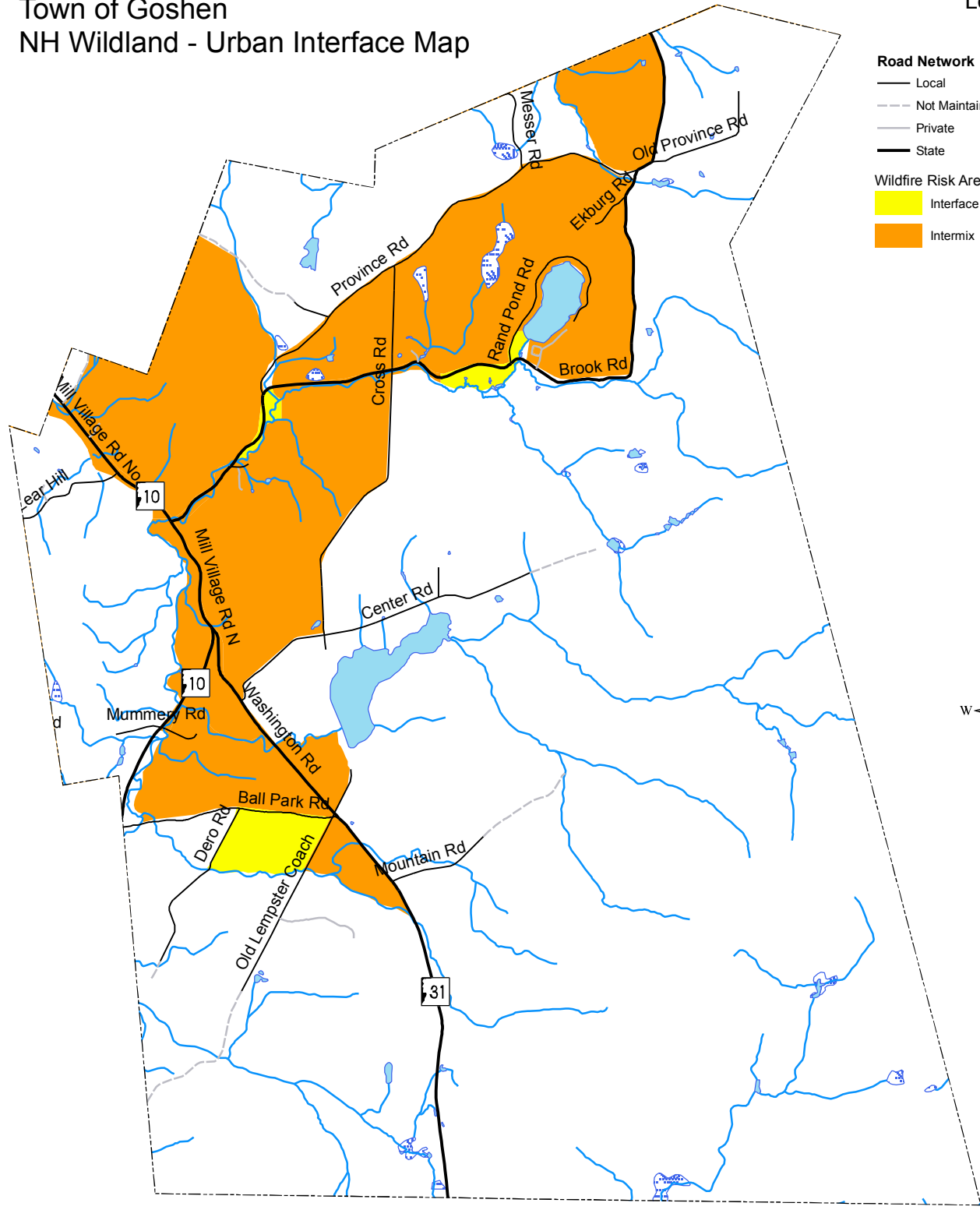


# Town of Goshen NH Wildland - Urban Interface Map

## Legend

- |                           |                       |
|---------------------------|-----------------------|
| <b>Road Network</b>       | <b>Water Features</b> |
| — Local                   | ☐ Lake/Pond           |
| - - - Not Maintained      | ☐ Reservoir           |
| — Private                 | ☐ Swamp/Marsh         |
| — State                   | — Stream/River        |
|                           | ☐ Town Line           |
| <b>Wildfire Risk Area</b> |                       |
| ☐ Interface               |                       |
| ☐ Intermix                |                       |

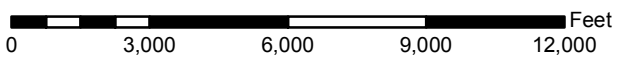


Source Data:  
Radeloff, V. C., R. B. Hammer, S. I Stewart, J. S. Fried, S. S. Holcomb,  
and J. F. McKeefry. 2005. The Wildland Urban Interface in the United States.  
Ecological Applications 15:799-805.

Base map features from NH GRANIT, digitized by Complex Systems  
Research Center, UNH.

Disclaimer:  
Digital data in NH GRANIT represent the efforts of the contributing  
agencies to record information from the cited source materials.  
Complex Systems Research Center (CSRC), under contract to the  
Office of Energy and Planning (OEP), and in consultation with  
cooperating agencies, maintains a continuing program to identify  
and correct errors in these data. OEP, CSRC, and the cooperating  
agencies make no claim as to the validity or reliability or to any  
implied uses of these data.

1:50,000



Map created by  
Upper Valley Lake Sunapee Regional Planning Commission,  
November 2007.