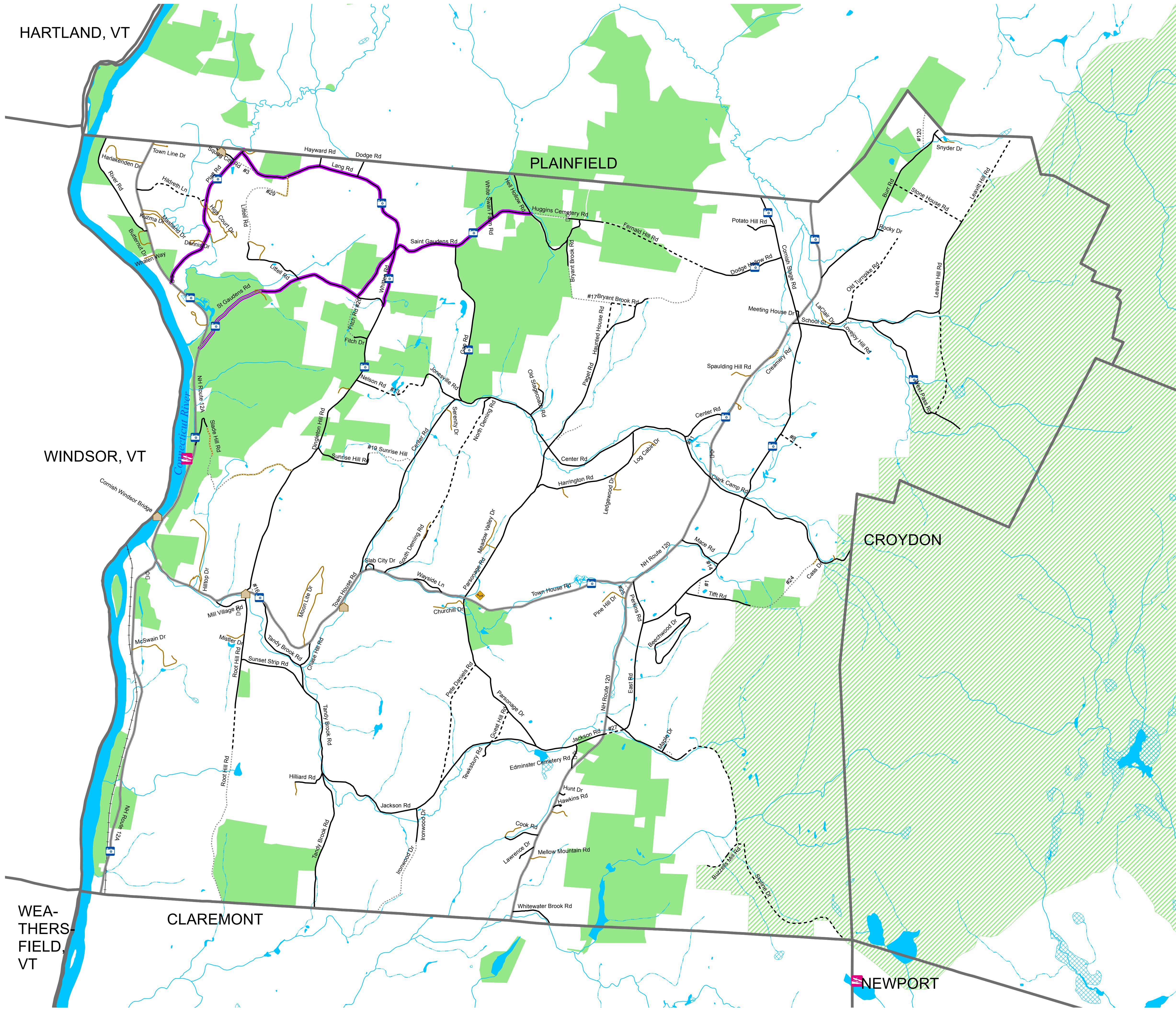


Cultural Resources Cornish, New Hampshire

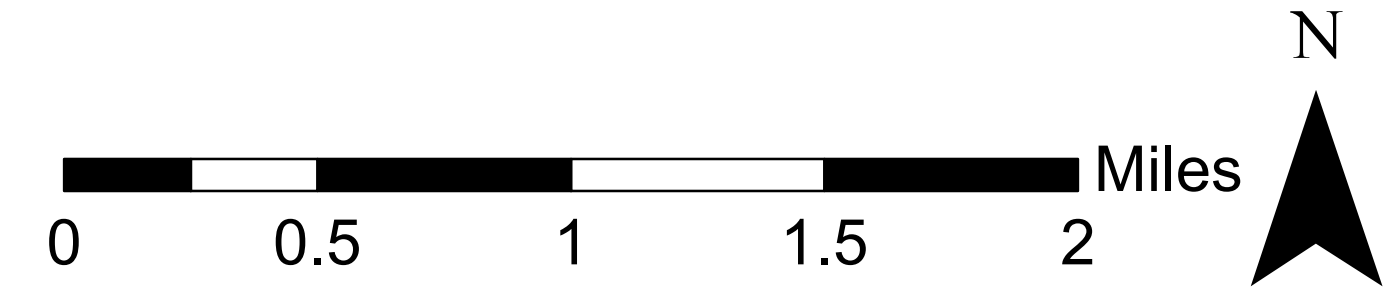


Legend

- Scenic Views
- Covered Bridge
- Cemetery
- Boat Launch
- Playground
- Town Boundaries

Roadways

- State
- Class V
- Class VI
- Discontinued
- Privately Maintained Drive (not all shown)
- Discontinued; Privately Maintained Drive
- Scenic Roads
- Railroad
- Conserved and Publicly Owned Land
- Corbin Park



Map created by Upper Valley Lake Sunapee Regional Planning Commission for the Town of Cornish, Dec 2013.

This map is intended for reference and planning purposes only. While this map represents the best available data, the Town of Cornish and UVLSRPC make no claim as to the validity or reliability of these data.

Data Sources:
 Scenic viewpoints from Cornish Conservation Commission, 2012. Boat launches and recreation sites from the Office of Energy and Planning, 2010. Covered bridges and cemeteries from USGS 7.5-minute topographic quadrangles, from CSRC, UNH, 1992. Conserved and public lands from CSRC, UNH, 2010, with 2011 updates from Upper Valley Land Trust. Not all conserved and public lands are open for public recreation. Corbin Park boundary approximated by UVLSRPC, 2007. Scenic roads from Cornish Planning Board, 2010. Roads from the NH Department of Transportation, 2008, with updates from Cornish town maps and Cornish Planning Board. Water features from NH Hydrography Dataset from CSRC, UNH, 2006. Town boundaries, railroad and place names from CSRC, UNH, 1992. Statewide datasets (1:24,000 scale) distributed by Complex Systems Research Center (CSRC), University of New Hampshire (UNH) via NH GRANIT.

Disclaimer:
 Digital data in NH GRANIT represent the efforts of the contributing agencies to record information from the cited source materials. CSRC, under contract to the Office of Energy and Planning (OEP), and in consultation with cooperating agencies, maintains a continuing program to identify and correct errors in these data. OEP, CSRC, and the cooperating agencies make no claim as to the validity or reliability or to any implied uses of these data.