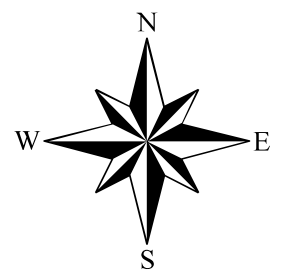
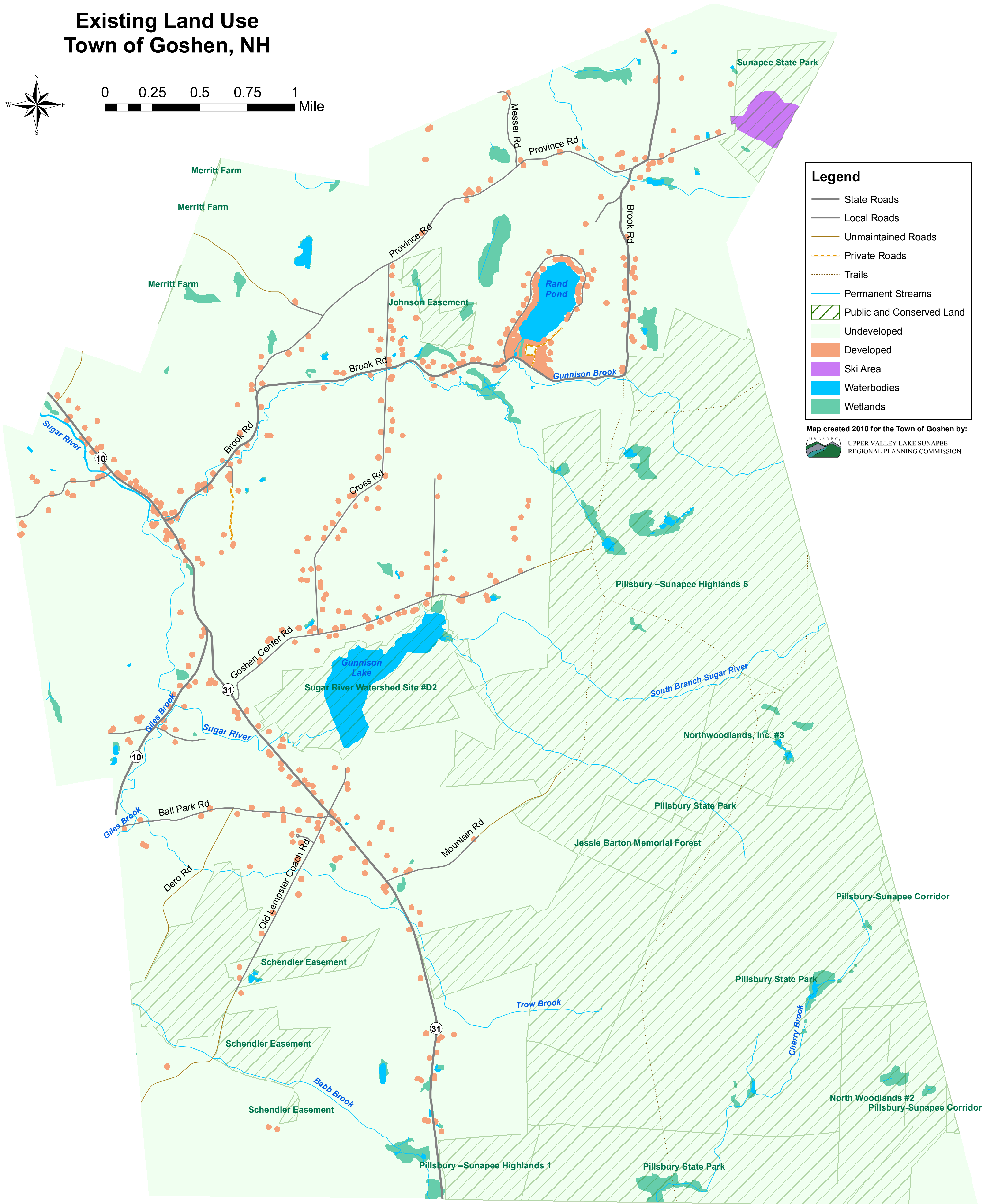


# Existing Land Use Town of Goshen, NH




0 0.25 0.5 0.75 1 Mile



**Legend**

- State Roads
- Local Roads
- Unmaintained Roads
- Private Roads
- ⋯ Trails
- Permanent Streams
- ▨ Public and Conserved Land
- Undeveloped
- Developed
- Ski Area
- Waterbodies
- Wetlands

Map created 2010 for the Town of Goshen by:  
 UPPER VALLEY LAKE SUNAPEE REGIONAL PLANNING COMMISSION

**Data Sources (distributed by NH GRANIT):** Land use developed from USGS topographic maps and 2009 air photos. Air photo from USDA Farm Service Agency, 1-meter resolution. One-half acre of developed area was mapped around each building. Wetlands from National Wetlands Inventory, 2002. Water features from NH Hydrography Dataset, 2006. Roads from NH Dept of Transportation, 2010. Trails from Goshen Planning Board, 2010. Conserved and public undeveloped land over 2 acres from Complex Systems Research Center (CSRC) at UNH, 2009. Other base map features digitized from USGS topographic maps by CSRC, 1992. **Data Source Disclaimer:** Data in NH GRANIT represent the efforts of the contributing agencies to record information from the cited source materials. No claim is made as to the validity or reliability or to any implied uses of these data.